



RH Series

- Features, Attributes, Benefits



RH113

F: Grille

A:

- Standard chrome
- Optional shadow gray metallic
 - Non SPO Option

B:

- Refreshed appearance
- Customer preference



RH113

F: Halogen and LED fog lights

A:

- Polycarbonate lens
- Vibration isolated mounting

B:

- Impact resistant and does not turn cloudy over time
- Extend halogen bulb life



RH113

F: Hood mirrors

A:

- Black and bright heads
- Passenger or both sides, or none

B:

- Improved exterior appearance
- Able to obtain only what is desired



RH113

F: Splash panels

A:

- Hood mounted splash panels lift with the hood

B:

- Easy engine compartment



RH113

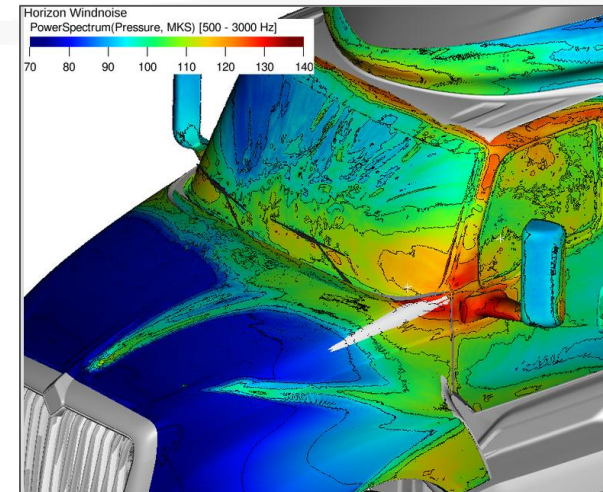
F: Doors

A:

- 2x stiffer door structure with 1.5 mm more seal compression
- Increased door opening angles

B:

- 4 sones minimum wind noise reduction, eliminated draftiness
- Provides easier entry and exit



RH113

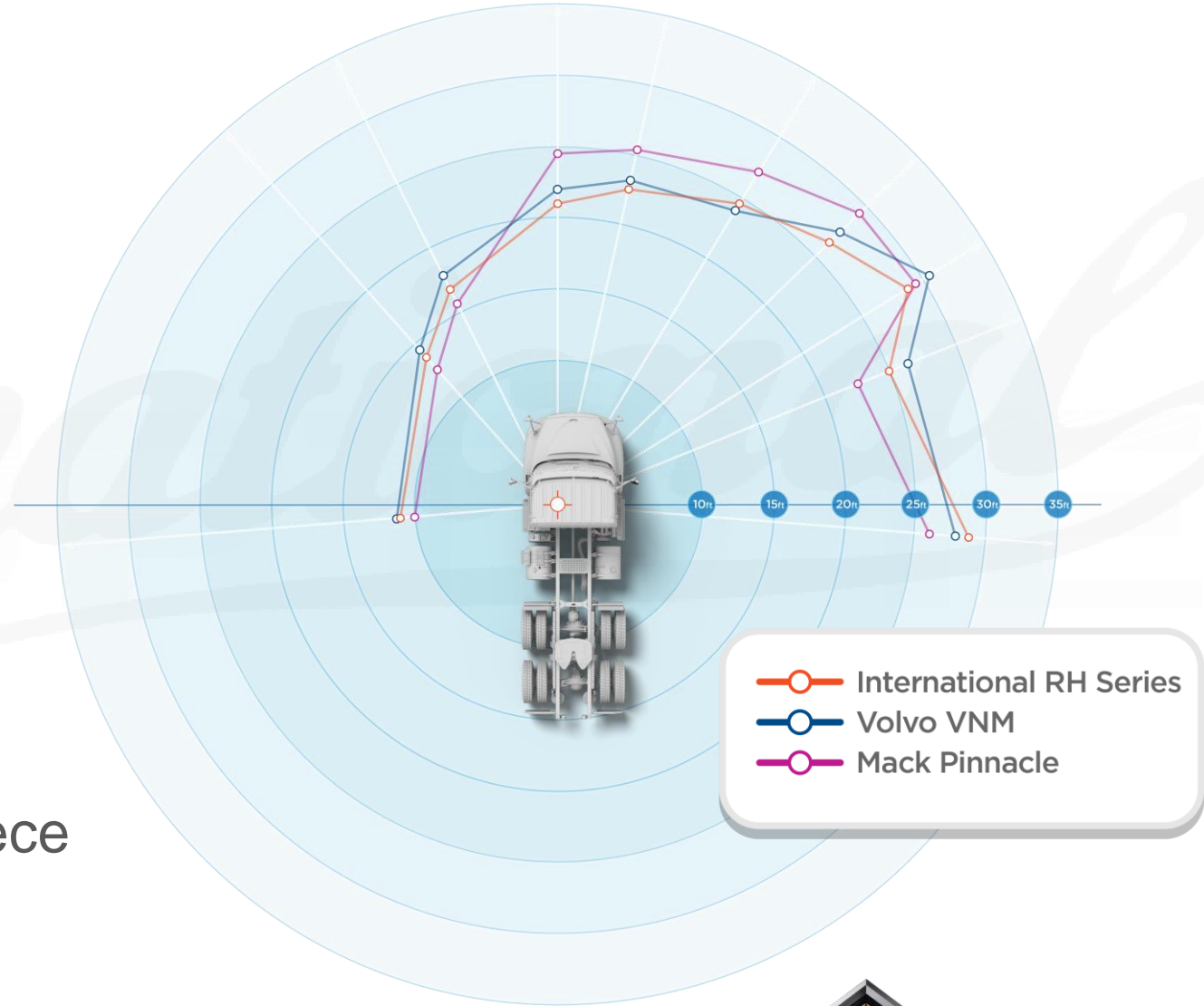
F: Door window

A:

- Single large window

B:

- Significantly improved visibility
 - 20" in the forward zone
 - Eliminates blind spot with two piece window divider
- Improved aerodynamics by removal of divider support



RH113

F: Door windows

A:

- Full down position leaves some glass exposed



B:

- Small window stickers, such as a fleet's unit number, can wear after repeatedly passing through the seal. If the sticker is applied to the glass shown, it will not wear

RH113

F: Door handles

A:

- Large, sturdy handle design
- Larger pocket behind the handle
- Color matched to the door mirrors
 - Standard SPO would be a black door handle.
 - If “Bright Mirror Package” is selected you will get the bright door handle

B:

- Provide a solid first impression
- Easy to open with winter gloves
- Improve look and residual value



RH113

F: Door lock key tumbler

A:

- Serviced from inside the vehicle

B:

- Provides a secure environment against a vehicle break in



RH113

F: Pedestal door mirrors

A:

- Elliptical shape
- Forward mounting location
- Lightweight design

B:

- 0.5% better fuel economy
- 12% lower neck turn angle
- 7 lbs. reduction per vehicle
- Reduced defrost time vs. c-loop



RH113

F: Pedestal door mirrors

A:

- Marker lights eliminated

B:

- Eliminates the need for bulb replacement
- Eliminates the risk of fine and CSA score impact for driving with a burned out bulb
- Simpler design



RH113

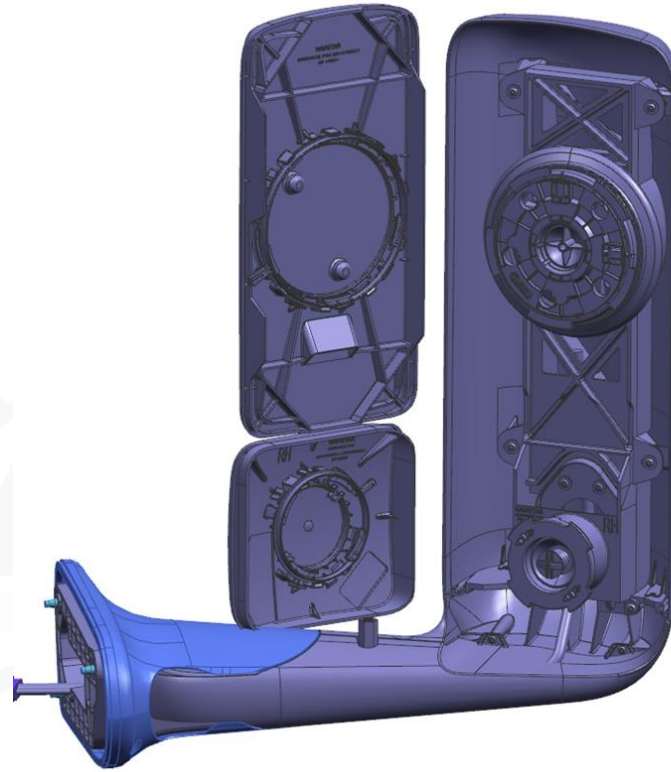
F: Pedestal door mirrors

A:

- Breakaway design
- Electrical connector at door
- Quick release lenses

B:

- Lower cost of ownership
- Allows interior wiring to remain in place when replacing a mirror assembly
- Lens replacement in seconds



RH113

F: Windshield

A:

- Curved windshield
- One piece design

B:

- Excellent visibility and better aerodynamics especially in crosswind
- Eliminates blind spot and leak path on 2 piece designs



RH113

F: Sunshade

A:

- Standard is without
- Option to add ProStar style sunshade painted roof color or stainless steel finish

B:

- 17 lbs. weight reduction
- Ala carte option available



IT'S UPTIME™

RH113

F: Cab

A:

- Steel construction

B:

- Easier and lower cost to repair than aluminum
- Exceeds both SAE and European safety standards



RH113

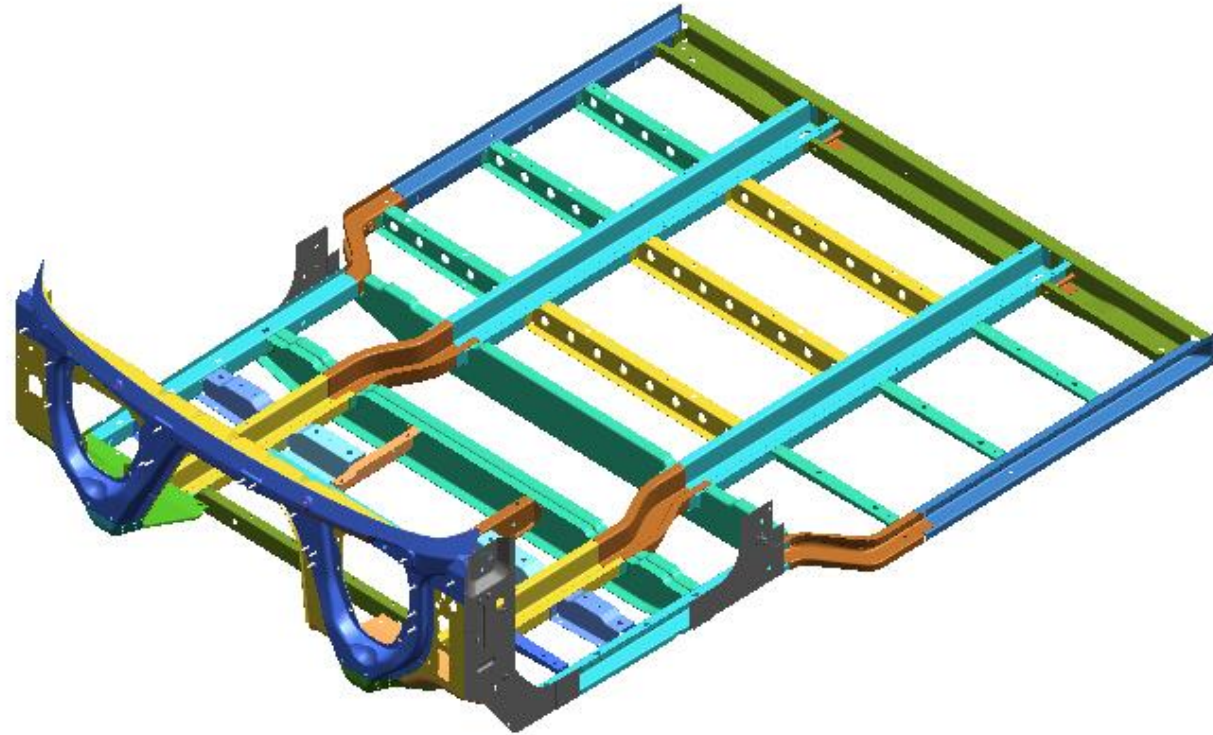
F: Cab floor

A:

- Stiff steel backbone, with an 18.6 Hertz stiffness exceeding the 17 Hertz requirement

B:

- Stiffness over 17 Hertz prevents the cab floor from amplifying road vibration, delivering a solid feel



RH113

F: Roof air deflector (day cab)

A:

- Unique roof air deflectors for with and without cab side extenders

B:

- Optimal aerodynamics for van style trailers



RH113

F: Tractor to trailer gap

A:

- Application engineers are able to spec an RH with a tractor to trailer gap as low as 36 inches

B:

- Every 6" reduction in tractor to trailer gap improve fuel economy by 0.5%



42 inches is a typical tractor to trailer gap for most customers

F: Predictive cruise control

A:

- Algorithm uses pre-loaded maps of all US highways to calculate the most efficient speeds throughout the route



Launched in April 2016

B:

- 2% fuel economy improvement with equivalent total driving time to standard cruise control

RH113

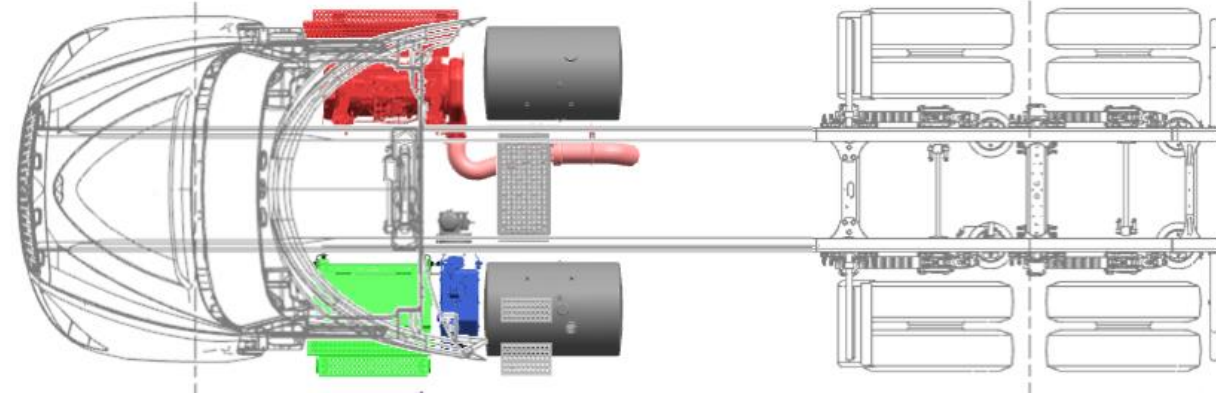
F: Under cab battery box

A:

- Aluminum battery boxes and plastic battery box covers

B:

- 45 lbs. weight reduction over steel under cab mounted design



RH113

F: DEF tank and cover

A:

- 10.6 gallon standard
- 15.9 gallon option
- Optional bright DEF tank cover

B:

- Up to 200 gallons of fuel (1:1)
- Up to 300 gallons of fuel (1:1)
- Improved appearance to match bright fuel tanks



1:1 - fuel and DEF reach empty at same time.

RH113

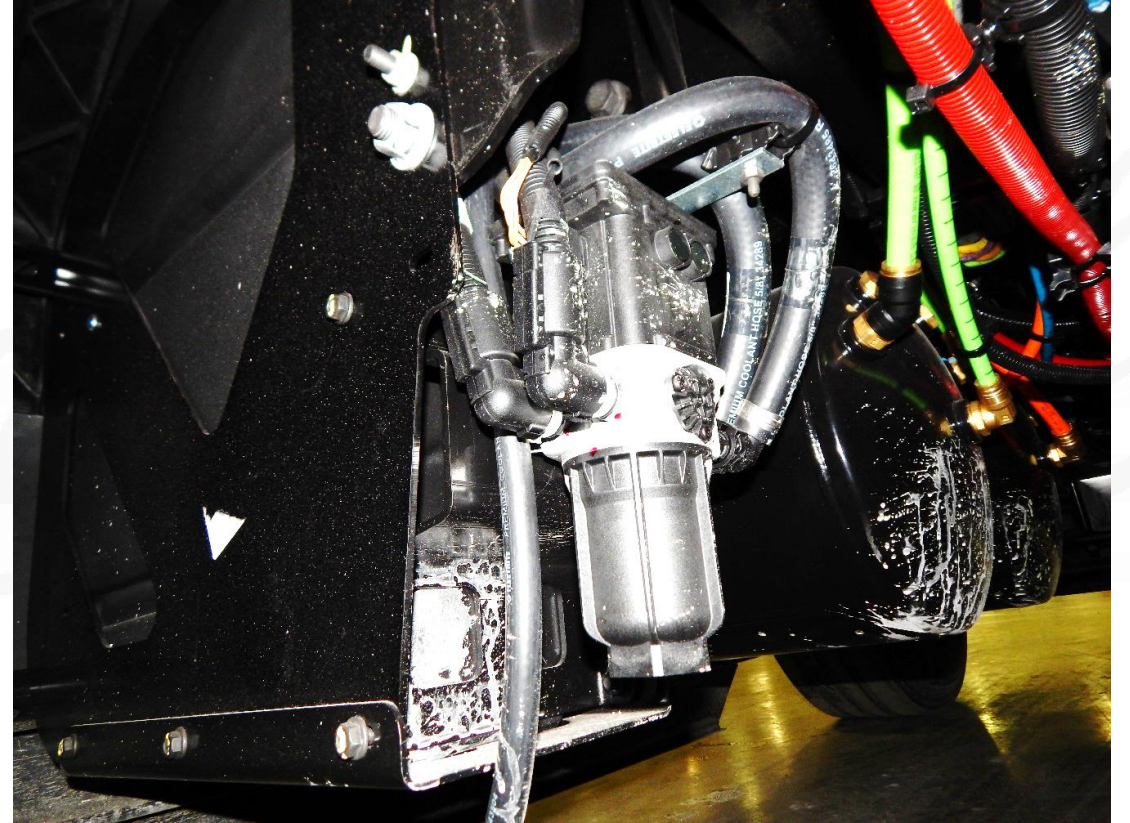
F: DEF module and DEF filter

A:

- Simplified design

B:

- Easy access to module and filter



RH113

F: Fuel tank hangers

A:

- Aluminum castings

B:

- 53 lbs. weight reduction on dual fuel tanks
- Eliminates a cross support, opening space for a PTO



RH113

F: Single canister after treatment

A:

- Light weight, compact design

B:

- 100-105 lbs. weight reduction over switchback system
- 80% less time required to replace
- Significant uptime benefit over EGR, incremental benefit over dual canister SCR



RH113

F: Exhauster vent

A:

- All RH series (day cab and sleepers) have one exhauster vent on back of cab

B:

- Eliminates a water intrusion path
- Eliminates a cab perforation which can lead to cab corrosion



RH113

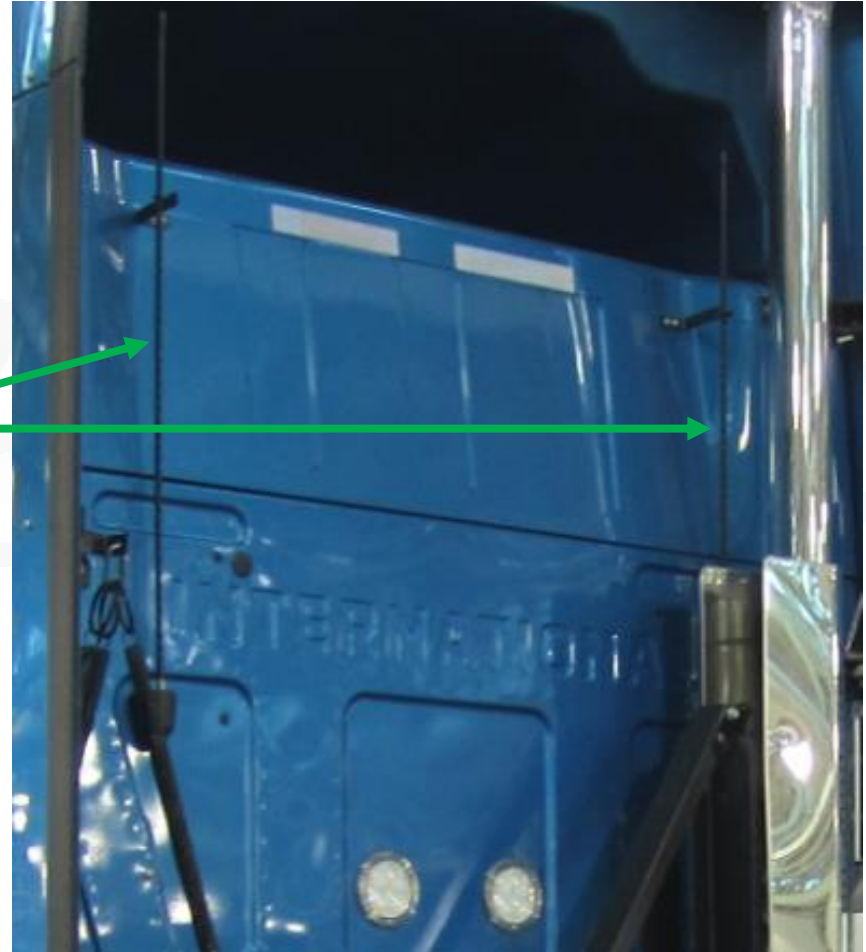
F: CB radio antennae (Non SPO Option for Fuel Economy focused Customer)

A:

- RH is standard without
- Mirror or back of cab antennae locations on sleepers

B:

- Lower vehicle cost (ala carte)
- Compared to mirror mounted:
 - 0.25% fuel economy improvement
 - 15% range improvement



RH113

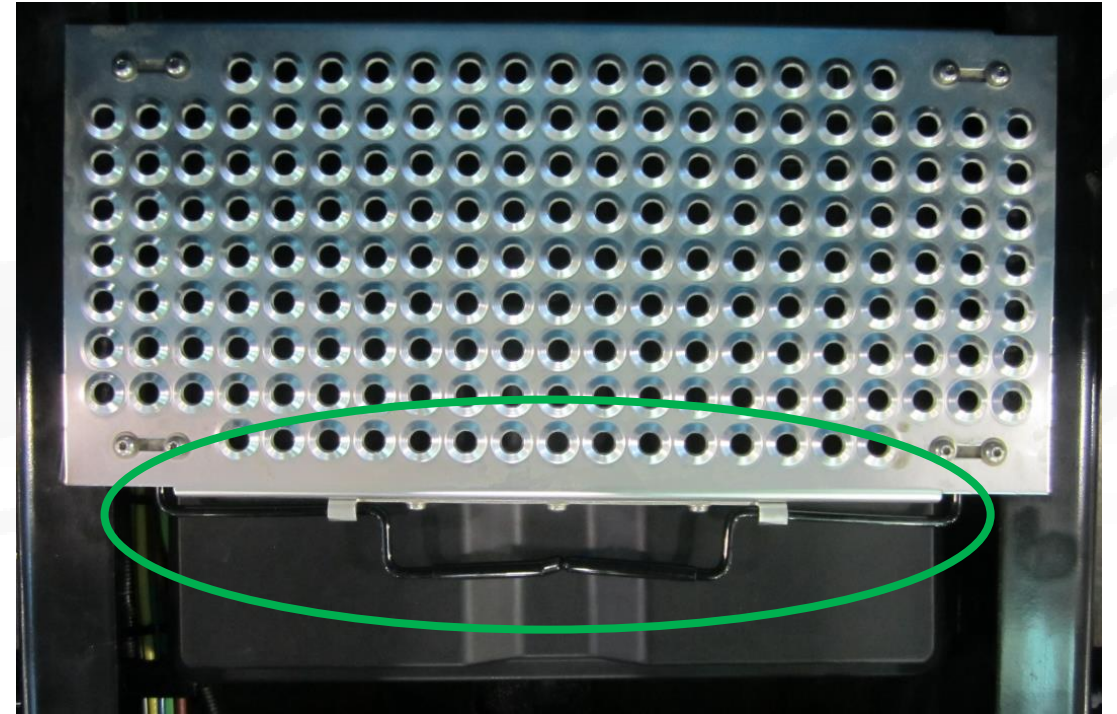
F: Deck plate quick release handles

A:

- Quick release handles on deck plates with between the rails battery boxes

B:

- Allows easy access to batteries for inspection



RH113

F: Key fob

A:

- Button text is paint in a groove
- Second auxiliary button

B:

- Groove retains paint for long life. If paint wears off, groove remains
- More functionality



RH113

F: Key fob

A:

- Key fob can be programmed via Diamond Logic Builder

B:

- Fleet manager could perform remote start, pre-trip cycle, and set HVAC to max defrost for all trucks in the yard so vehicles are ready when drivers arrive
- Nearly all functions of the controls in the vehicle can be controlled via the key fob when programmed with DLB



RH113

F: Door panel

A:

- Deeper map pocket to better retain driver logs, atlas, etc.
- 300 lbs. rated grab handle and map pocket

B:

- Driver clinics requested
- Robust for all drivers to use



IT'S UPTIME™

RH113

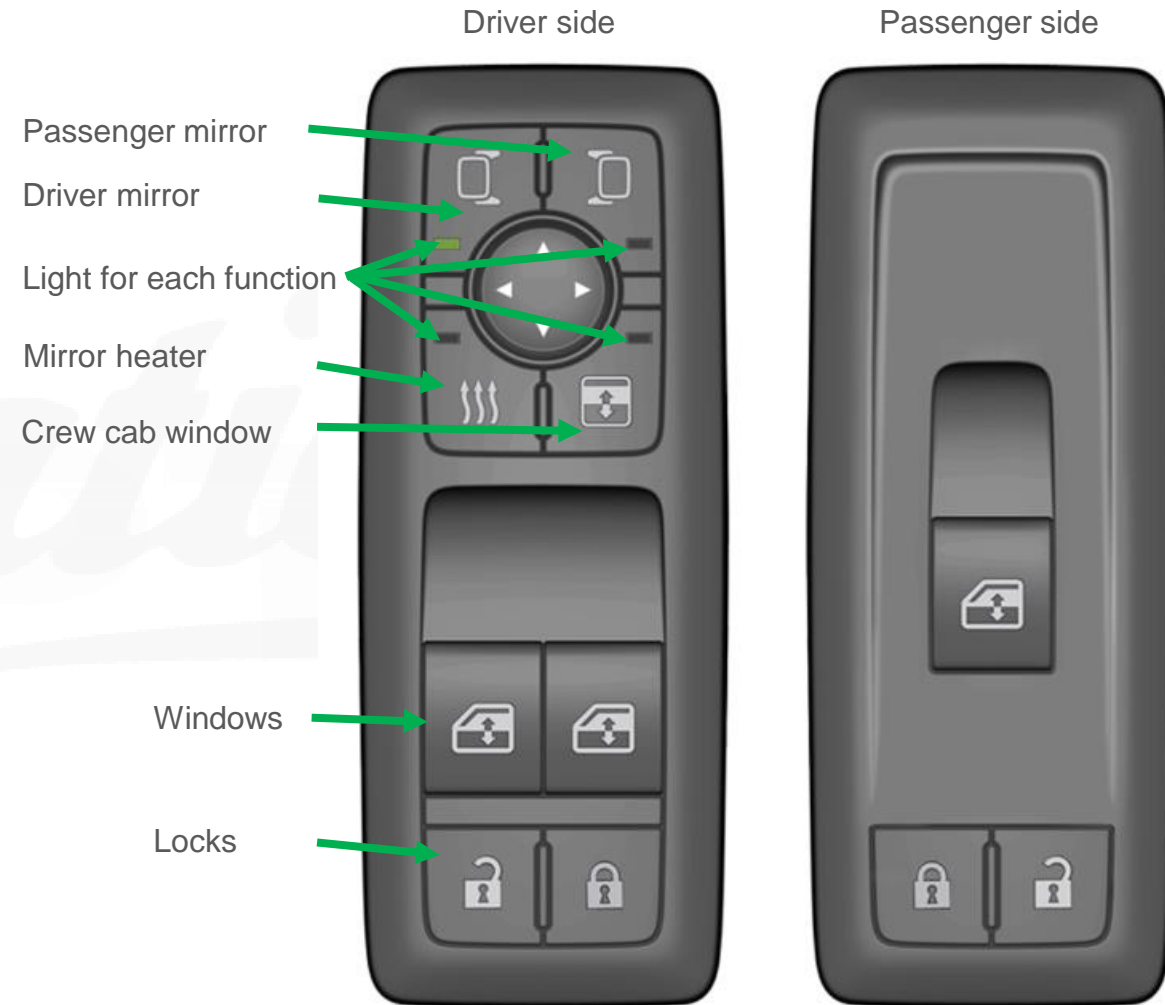
F: Power window and door locks

A:

- Modern, automotive appearance
- Dual shot mold for button symbols
 - White piece containing ISO symbol is a molded part, integral to button
- Backlit

B:

- Driver familiarity
- Text cannot wear off, residual value benefit
- Easy to see at night



RH113

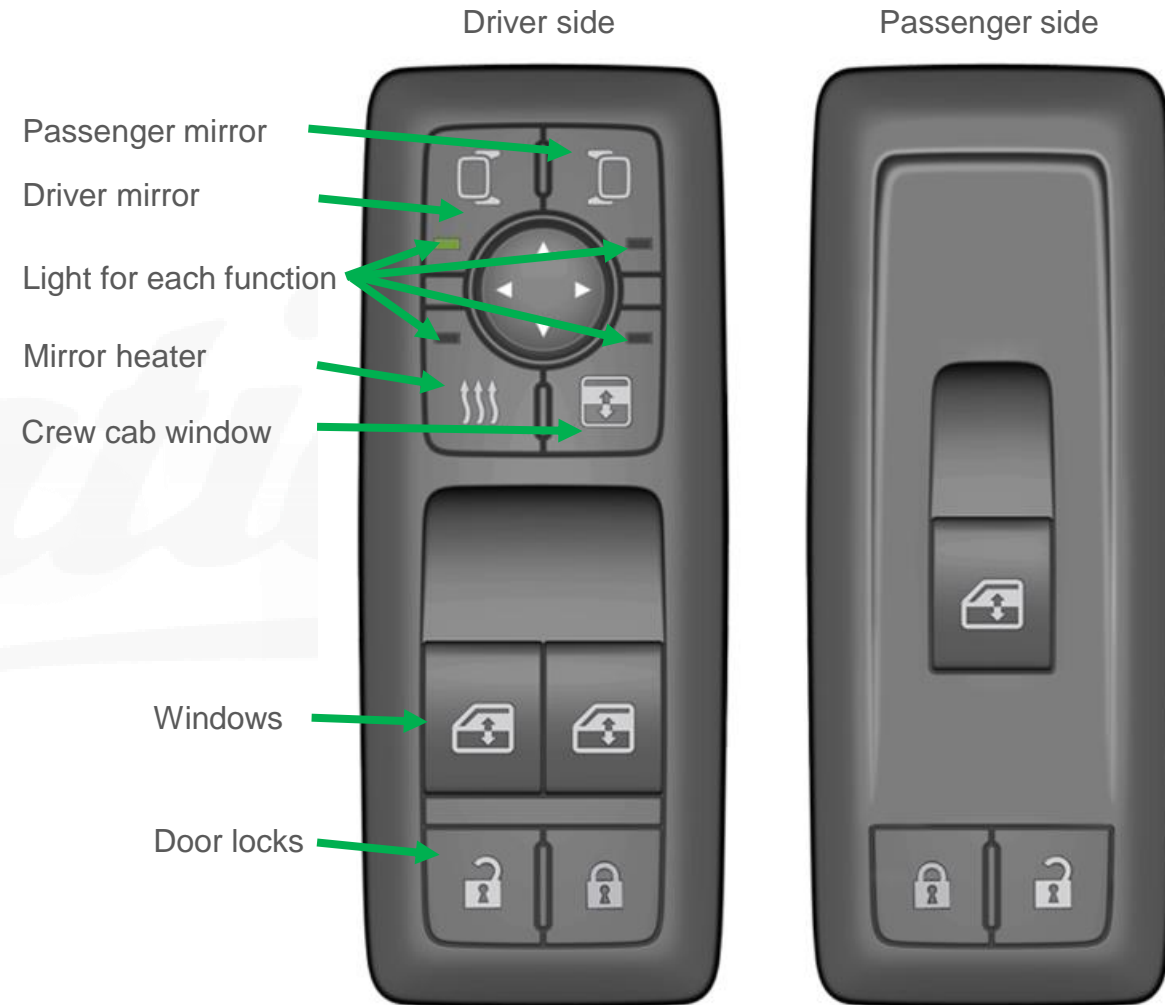
F: Power window and door locks

A:

- Light for mirror selection
- Light for door mirrors heat on
- Crew cab window button and light

B:

- Identifies which mirror is adjusted
- Ten minute default timer, dealer can change with Diamond Logic Builder
- Allows same window buttons to be used to control crew cab windows



RH113

F: Power mirror controls with manual windows and locks

A:

- Modern, automotive appearance
- Dual shot mold for button symbols
 - White piece containing ISO symbol is a molded part, integral to button
- Backlit

B:

- Driver familiarity
- Text cannot wear off, residual value benefit
- Easy to see at night



RH113

F: Safety belts and use

A:

- Orange is the standard in the SPO. Optional brightly colored safety belts (red and green) are also available via Non SPO Option.
- Audible alarm with warning lamp
 - Non SPO Option

B:

- Visual reminders and audible alarm to remind to the driver to use the safety belt



RH113

F: Rolltek air bag

A:

- Inflatable air bar for rollover crash protection
 - Driver seat belt is tensioned
 - Seat suspension is lowered
 - Side air bag inflates



B:

- Cushion head impact and reduce neck / head injuries



RH113

F: Air horn lanyard

A:

- Roof mounted lanyard

B:

- During an evasive maneuver, locating the steering wheel air horn button can be difficult. Roof mounted design improves safety and is driver clinic recommended



RH113

F: Blue tooth

A:

- A pillar mounted microphone
- Steering wheel buttons

B:

- Allows driver to speak at a normal decibel level
- Allows driver to easy answer and end a phone call



RH113

F: Steering wheel

A:

- 4 spoke, 18", black

B:

- Ala carte option to upgrade to premium steering wheel with leather wrap and colored International Diamond logo



RH113

F: Steering wheel buttons

A:

- Laser etched
- ISO symbols
- Backlit

B:

- Text will not wear off, improving residual value
- Familiarity for drivers
- Easy to read at night



RH113

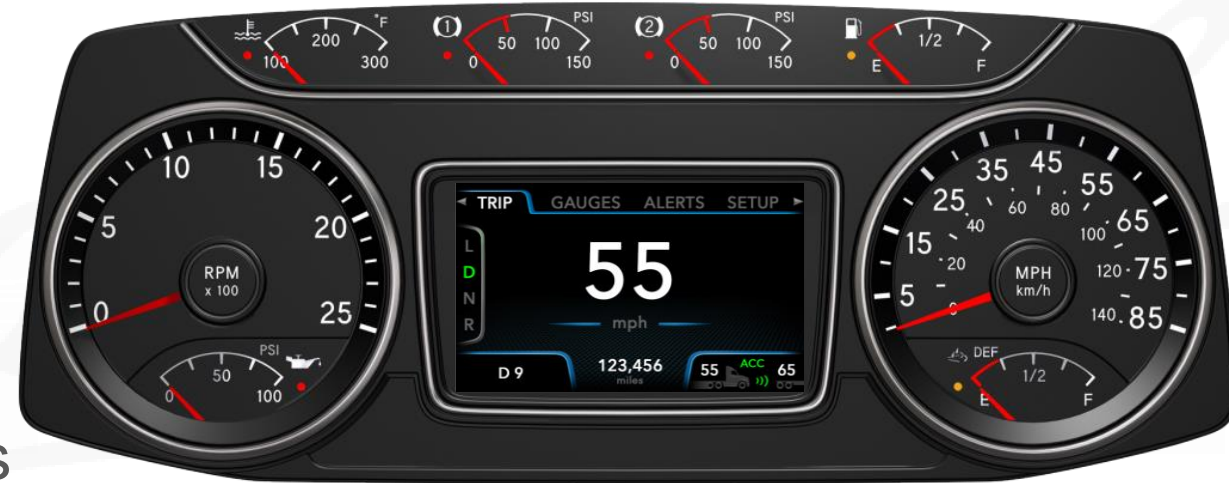
F: Premium cluster-Standard in SPO 876

A:

- Incorporates all necessary driver communications into one location
 - Alerts, advanced braking, cruise control, transmission, TPMS, gauges

B:

- Improves time spent with eyes on the road for safety
- Easy to use
- Eliminates the need for many hardwired gauges



RH113

F: Pagination switch

A:

- Located on the wing panel for controlling the premium cluster

B:

- Navigation buttons let you navigation between and within a category easily
- Deters driver from using it while vehicle in motion, to reduce the potential for distracted driving



LT625

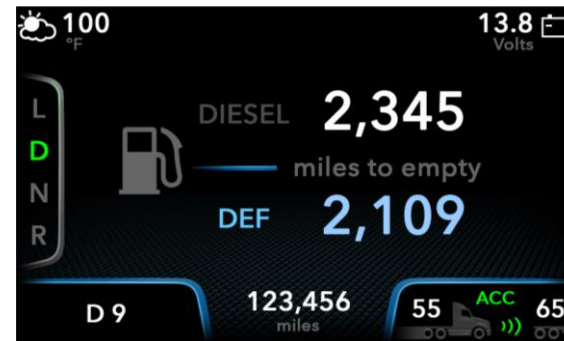
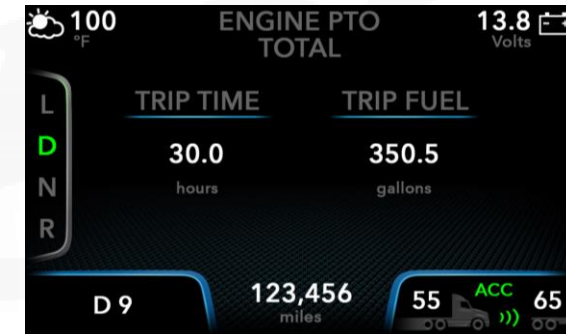
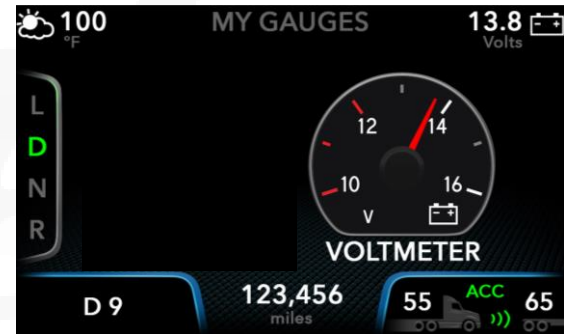
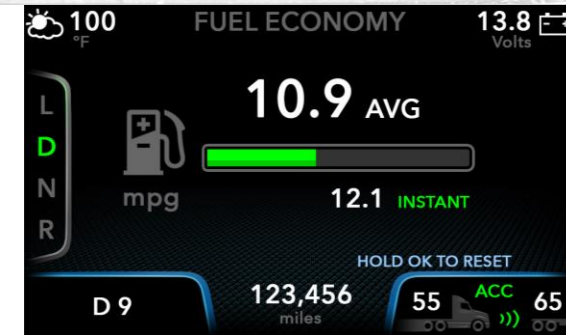
F: Premium cluster

A:

- Select from standard virtual gauges (no feature code required)
 - Wheel based vehicle speed
 - Instantaneous & average MPG
 - Voltmeter
 - PTO mode
 - Miles to empty

B:

- Data available directly in front of the driver for easy read ability



Vehicles equipped with collision mitigation systems display on the premium cluster also

LT625

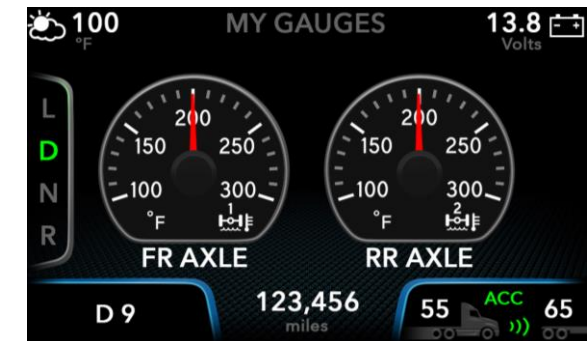
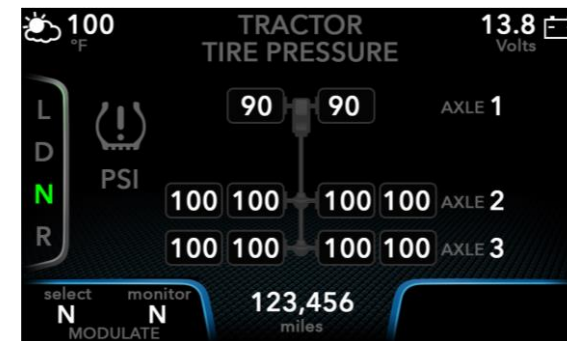
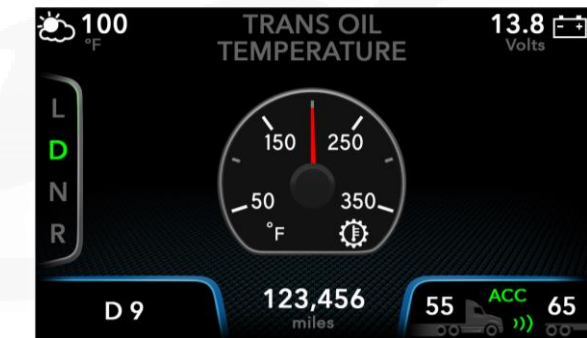
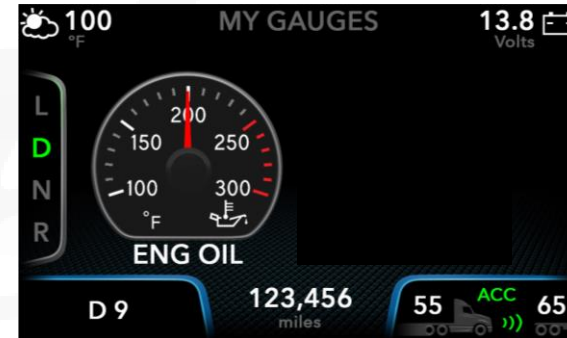
F: Premium cluster

A:

- Select from optional virtual gauges
 - Ambient air temperature - 0016HCS
 - Axle load - 0016HKE
 - Air application (brake) - 0016HLR
 - Boost pressure (intake manifold) – 0016HLT
 - Engine oil temperature - 0016HLW
 - Rear axles differential oil temperatures (two gauges for two differentials) - 0016HLS
 - Tire pressure - 0016VKX
 - Transmission oil temperature - 0016HLU / 0016HLV

B:

- Data available directly in front of the driver for easy read ability



LT625

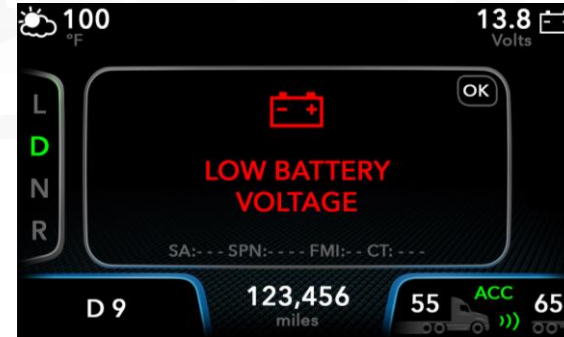
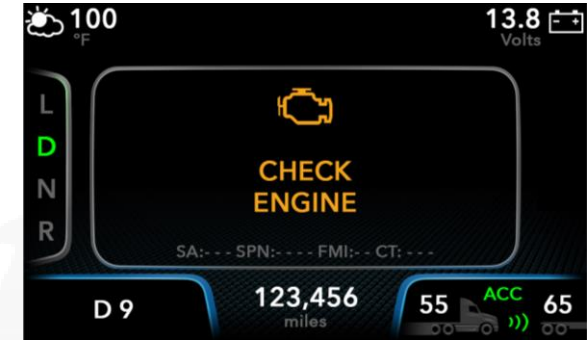
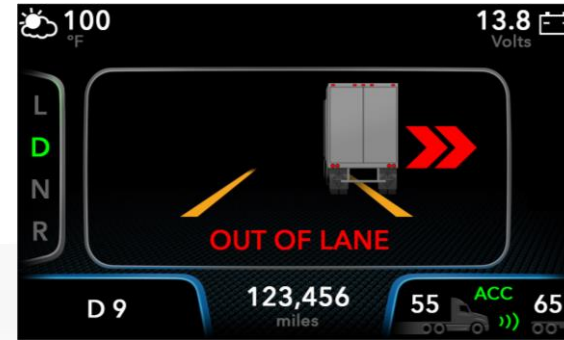
F: Premium cluster

A:

- Pop up displays

B:

- Driver is alerted to potential issues



RH113

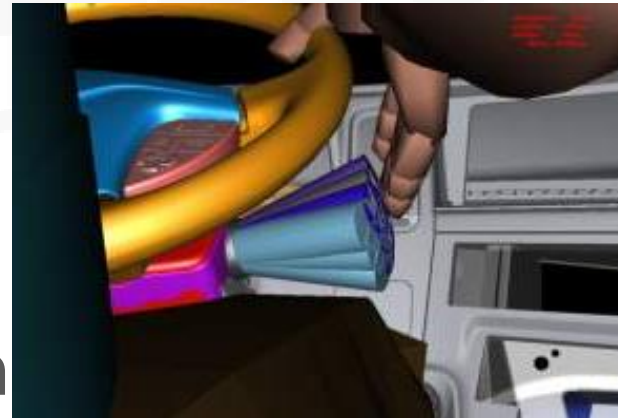
F: Stalk shifter

A:

- L-D-N-R, engine brake, and manual shifting in a single control

B:

- Intuitive operation
- Location allows use with hand on the wheel for safety
- Easily used with heavy winter gloves



RH113

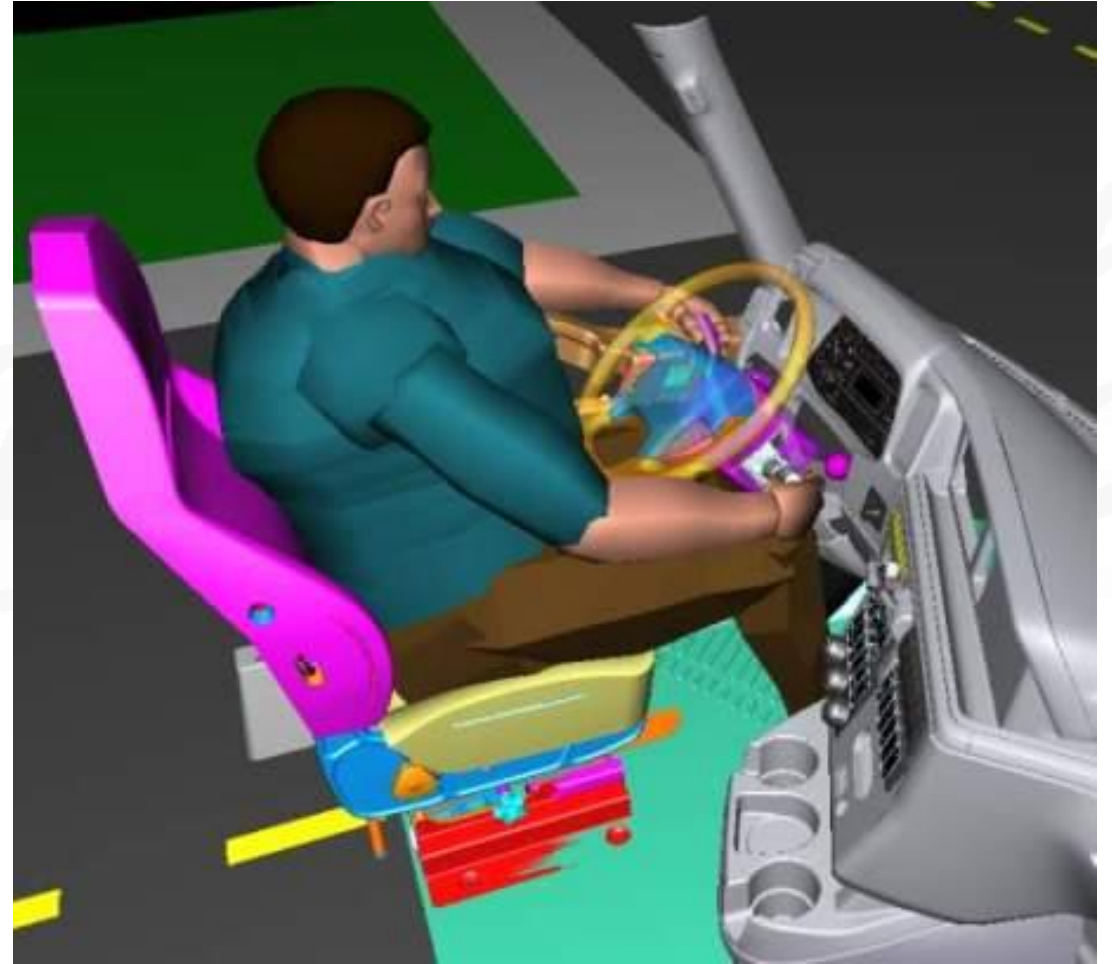
F: Stalk shifter

A:

- L-D-N-R, engine brake, and manual shifting in a single control

B:

- Allows driver to keep eyes on the road for safety, while using all of the stalk shifter's functionality



RH113

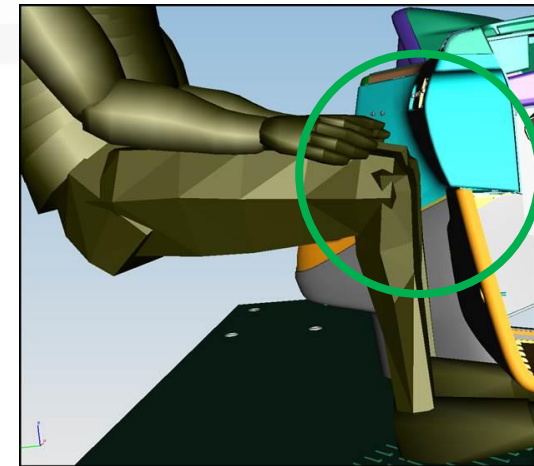
F: Lower console

A:

- Ergonomically shaped
- Thermoplastic polyolefin (TPO)

B:

- 1.6" more driver knee room when transitioning into the sleeper
- 2" more passenger knee and leg room
- Reduced bumps, squeaks, rattles



RH113

F: Wing panel

A:

- Ergonomically designed
- Controls locations prioritized by usage

B:

- Modern appearance, increased storage, contributes to a larger interior feel
- Convenient usage for the driver



RH113

F: Additional storage

A:

- Tray along upper wing panel
- Storage in place of driver information display and rocker switches, when not ordered

B:

- Driver clinics highlighted the need for storage
- Storage close to USB & Aux while charging portable electronics



RH113

F: Trailer brake

A:

- Located on the wing panel

B:

- Conveniently located for ease of frequent use



RH113

F: Hazard switch

A:

- Relocated to the center of the wing panel

B:

- Conveniently located and easily identified



RH113

F: Rocker switches

A:

- Laser etched
- ISO symbols
- Backlit

B:

- Text will not wear off, improving residual value
- Familiarity for drivers
- Easy to read at night

Space for up to 26 switches.



RH113

F: USB and Aux port

A:

- One each standard
- One each optional
- One additional USB in some radios

B:

- Plenty of charging options



Only the USB in the radio can be used for the radio; others are for charging only.

RH113

F: Cup and bottle storage

A:

- 2 cup holders
- 2 bottle holders

B:

- Driver clinics requested these additional features be added
- Fixed design eliminates the risk of rattles and breakage of moveable holders (Kenworth)



RH113

F: HVAC controls

A:

- Ergonomically designed
- Max defrost button



B:

- Modern appearance
- Goes to defrost, full hot, fresh air, max blower setting to deliver best in class defrost performance, getting you on the road quickly

RH113

F: HVAC performance

A:

- More powerful system with additional vent
- Fully closeable vents

B:

- Industry leading heating and cooling performance
- Best in class defrost performance
- Prevents “cold hands” with AC



RH113

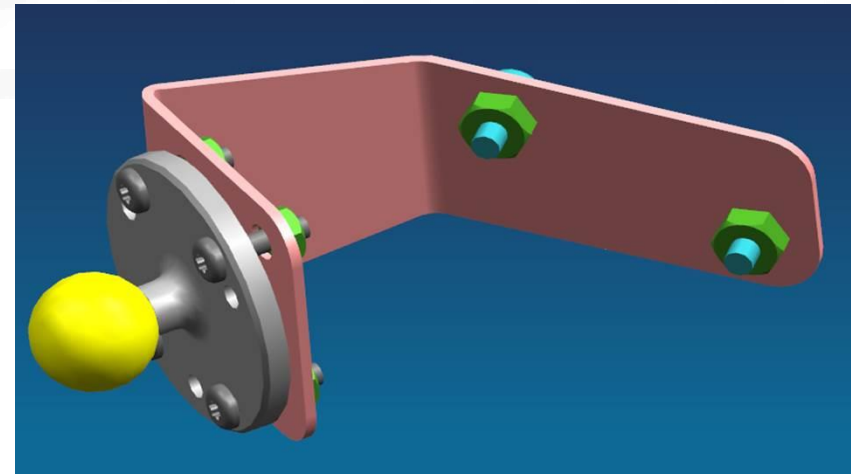
F: RAM brand telematics mount
Non SPO Option

A:

- Additional structure inside the instrument panel plus the RAM mount

B:

- Factory equipped method to mount telematics systems



RH113

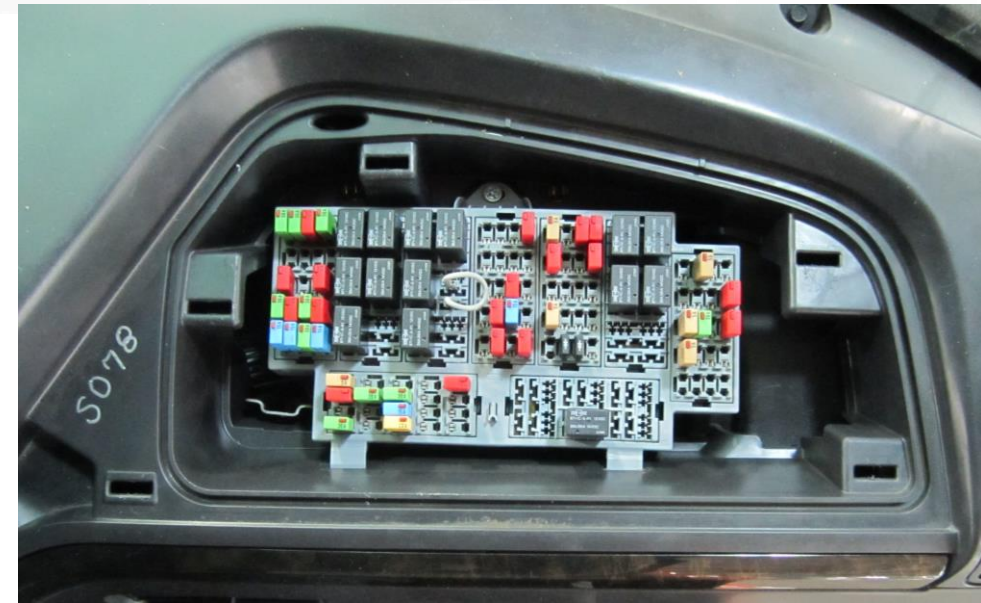
F: Fuse panel

A:

- In the top of dash on passenger side
- Gutter

B:

- Ease access to fuses, while providing a flat service for writing
- Protects fuses against liquids



RH113

F: Classic trim level

A:

- Dark neutral accents, black gauge bezels

B:

- Modern appearance, increased storage, contributes to a larger interior feel



RH113

F: Premium Interior Package trim level

A:

- Amber burl accents, bright gauge bezels, color accents, chrome door handles, graphite vinyl door insert

B:

- Benefits of Classic trim level with further interior refinements



RH113

F: Black cherry

Non SPO Option

A:

- Black cherry color accents added to door inserts, sleeper, and seats, International badge on passenger dash, and padded door topper

B:

- Benefits of Diamond trim level with further interior refinements



F: Ala carte feature codes

	ProStar Eagle	RH Diamond
Steering wheel	Leather wrapped	Non leather wrapped, ala carte upgrade to add

A:

- Less standard feature codes
- Less bundling of options
- More feature codes with small content

B:

- Customer can order what they want without extra content
- More price and weight competitive

RH113

F: Steering gear

A:

- Standard Sheppard steering gear

B:

- Industry leading “on center” feel while driving
- Lightweight



RH113

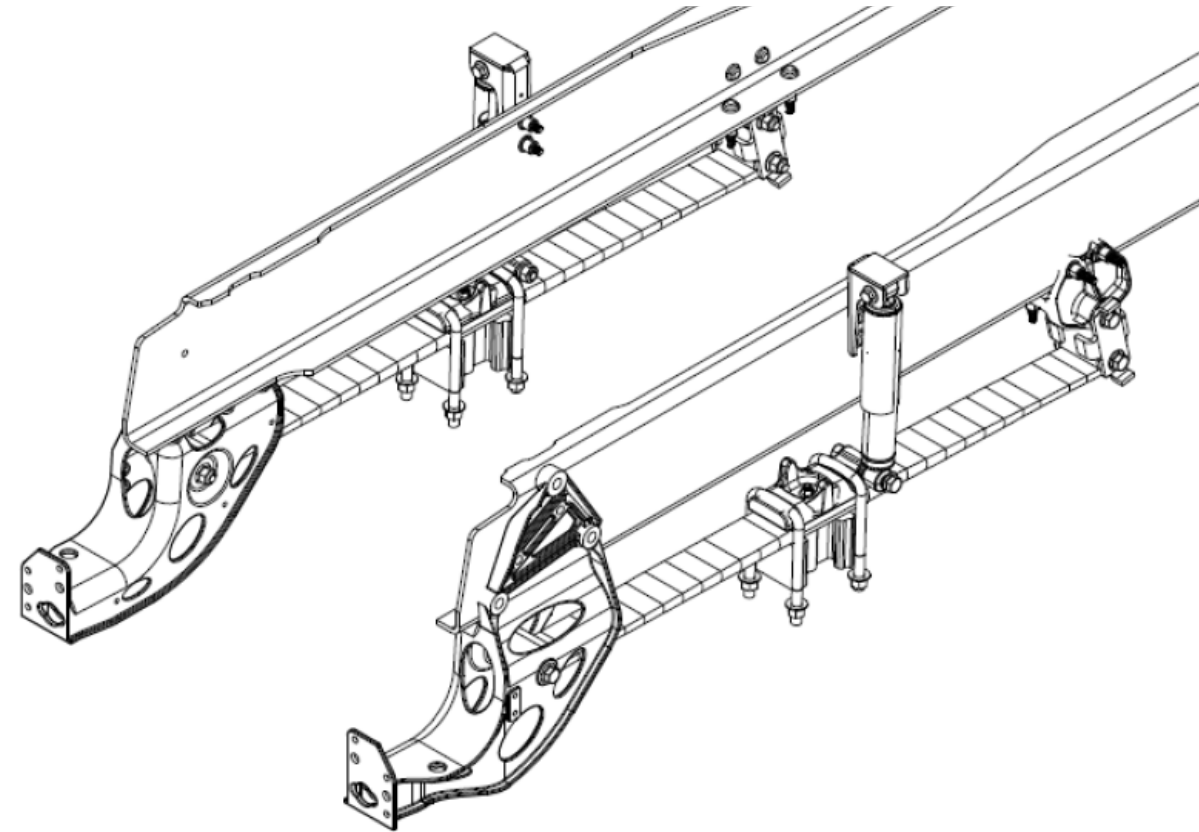
F: Monoleaf front suspension

A:

- 12k / 12.35k Monoleaf
- 13.2k Monoleaf
- Less un-sprung mass and hysteresis

B:

- 45 lbs. less than 12k / 12.35k parabolic taper leaf
- 97 lbs. less than 14k parabolic taper leaf
- Better ride quality



RH113

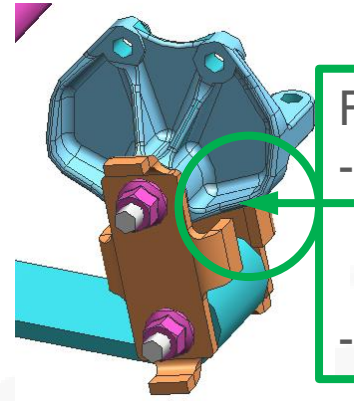
F: Monoleaf front suspensions

A:

- 12k-13.2k available with Hendrickson, Dana, Meritor axles

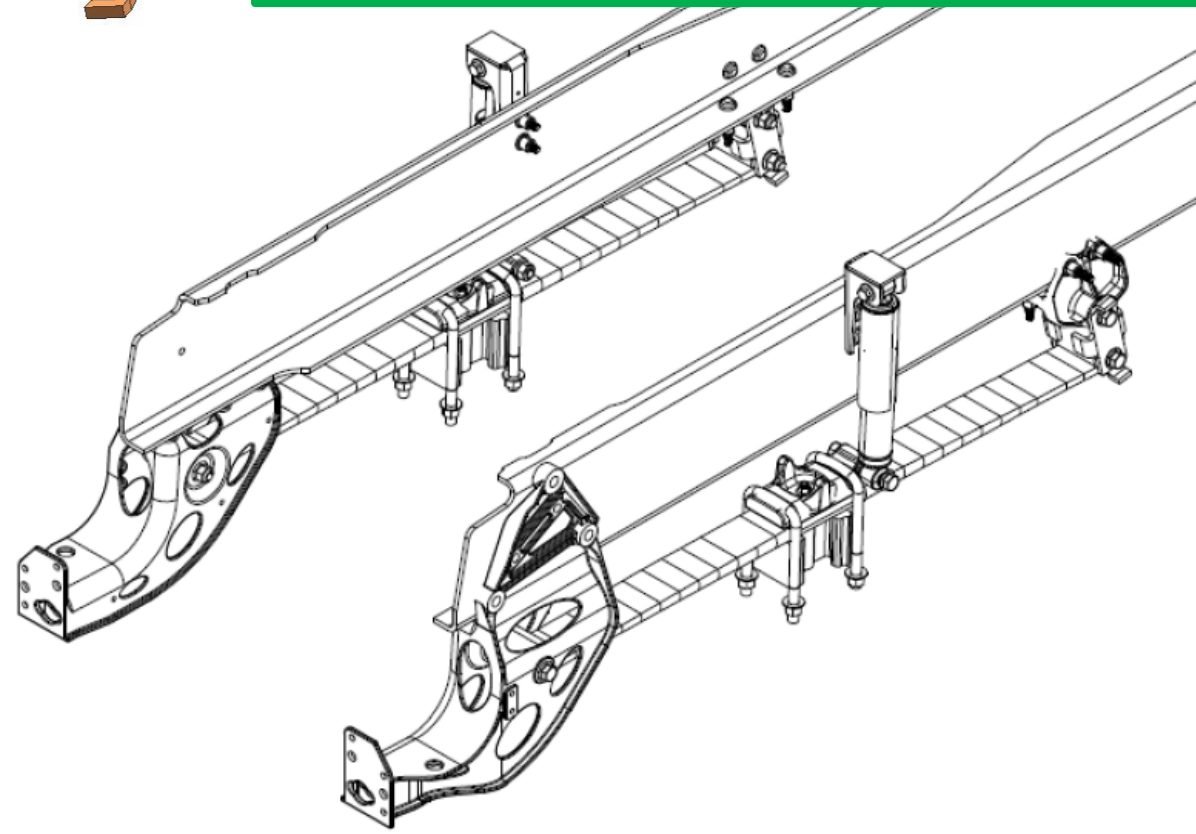
B:

- Now offered with all axle brands, enabling more configurations with the Monoleaf benefits



Front limb fracture:

- Shackle rotates rearward and contacts the shackle bracket to retain axle position.
- Equally reliable as current leaf offerings



RH113

F: International Ride Optimized Suspension (IROS)

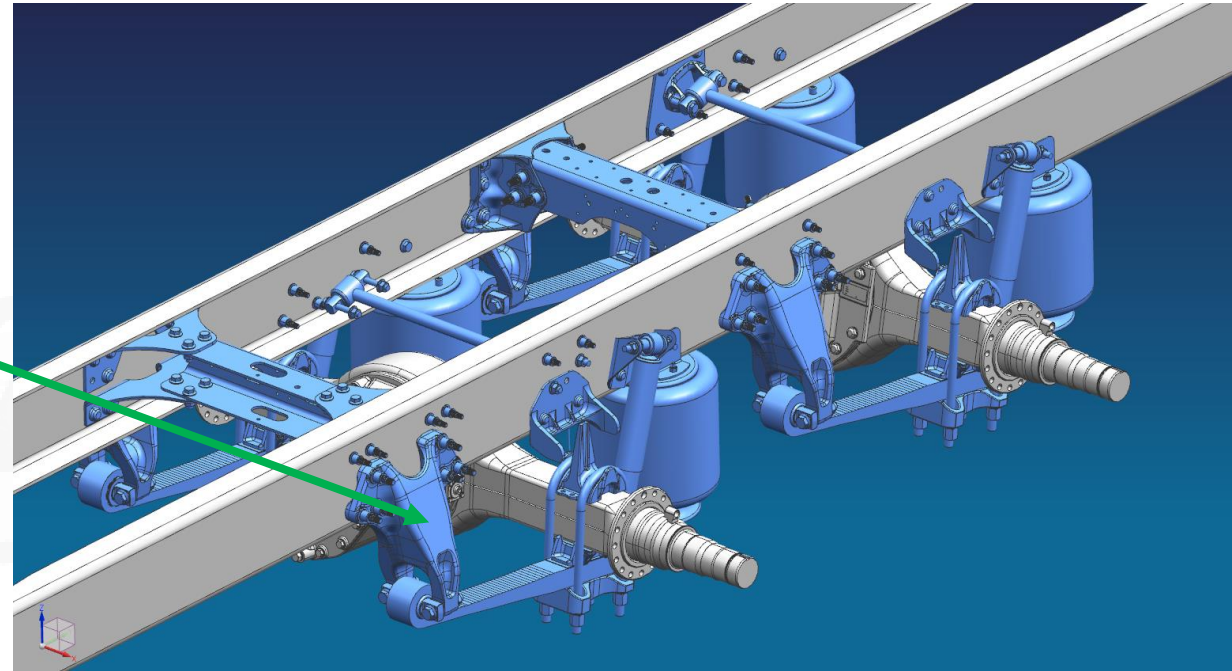
A:

- Cast aluminum support replaced steel
- Validated to same IROS HD requirements
- Ride tuned to front suspension and cab suspension

B:

- 130 lbs. weight savings
- Same durability
- Improved ride quality

Implemented on ProStar in June 2016.



RH113

F: Integrated receiver drier (IRD)

A:

- Automotive style integrated receiver drier condenser
 - Remove snap ring
 - Pull out Komo plug, filter, desiccant bag

B:

- Industry leading service ability



RH113

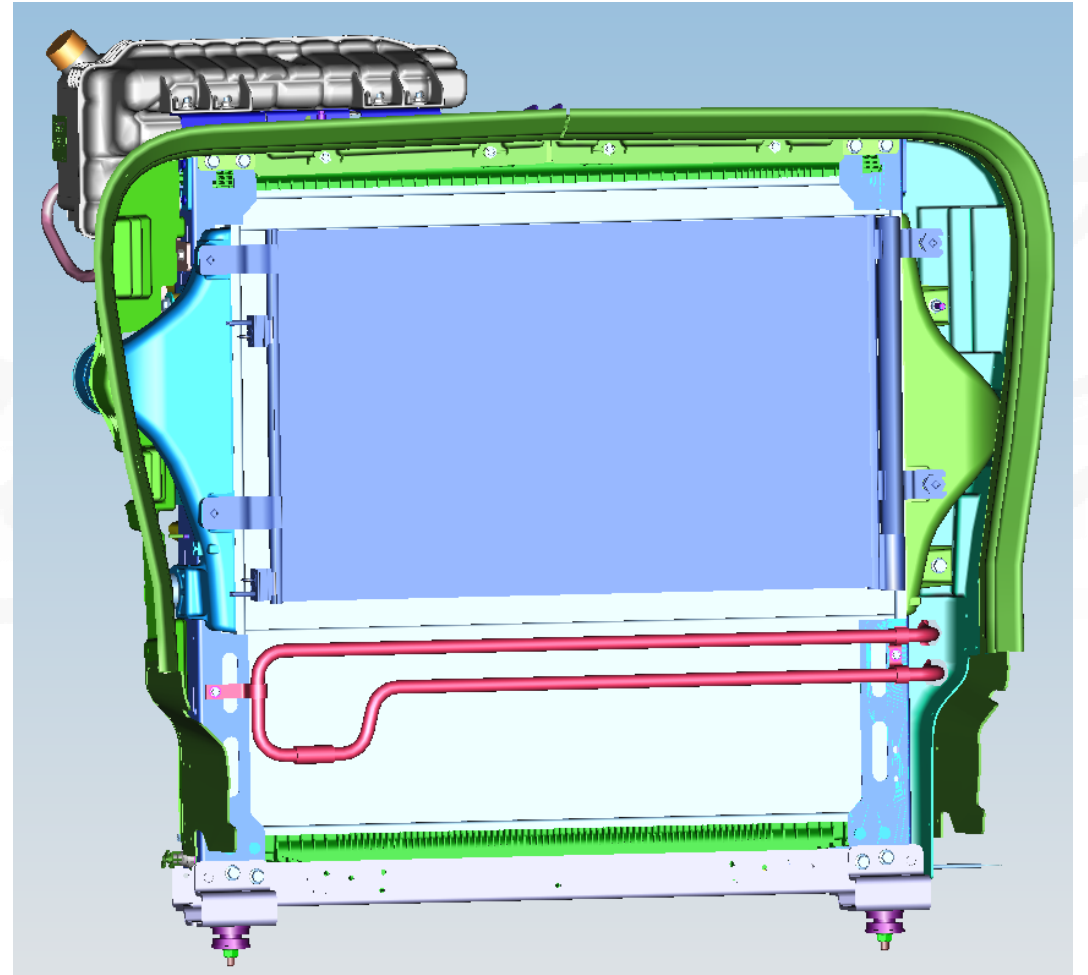
F: Cooling module

A:

- A26 does not use a low temperature radiator

B:

- 55 lbs. weight reduction (A26)
- Compatible with industry standard coolants
- Easier to clean



RH113

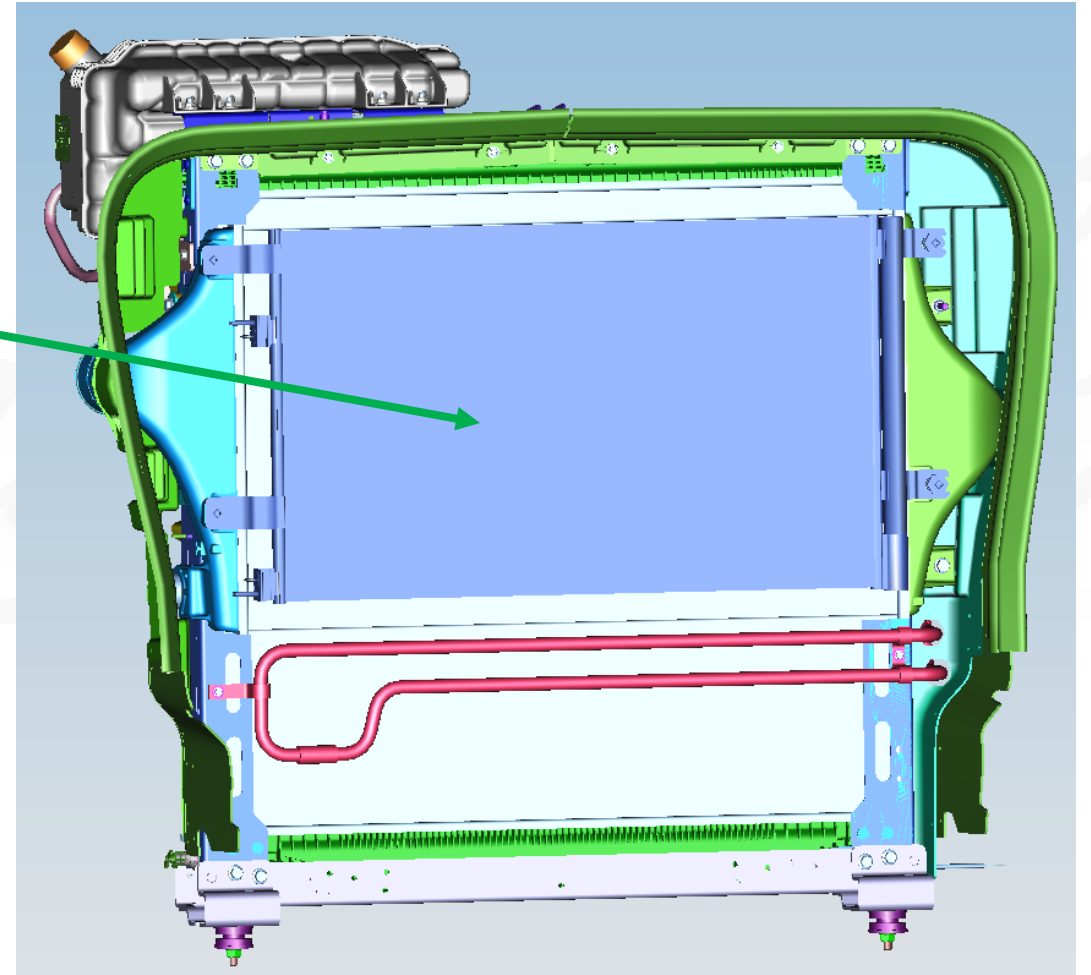
F: Cooling module

A:

- More effective at rejecting heat
- Less restrictive than ProStar

B:

- Less de-rate, less fan on time
- Promotes ram air effect to reduce fan on time



RH113

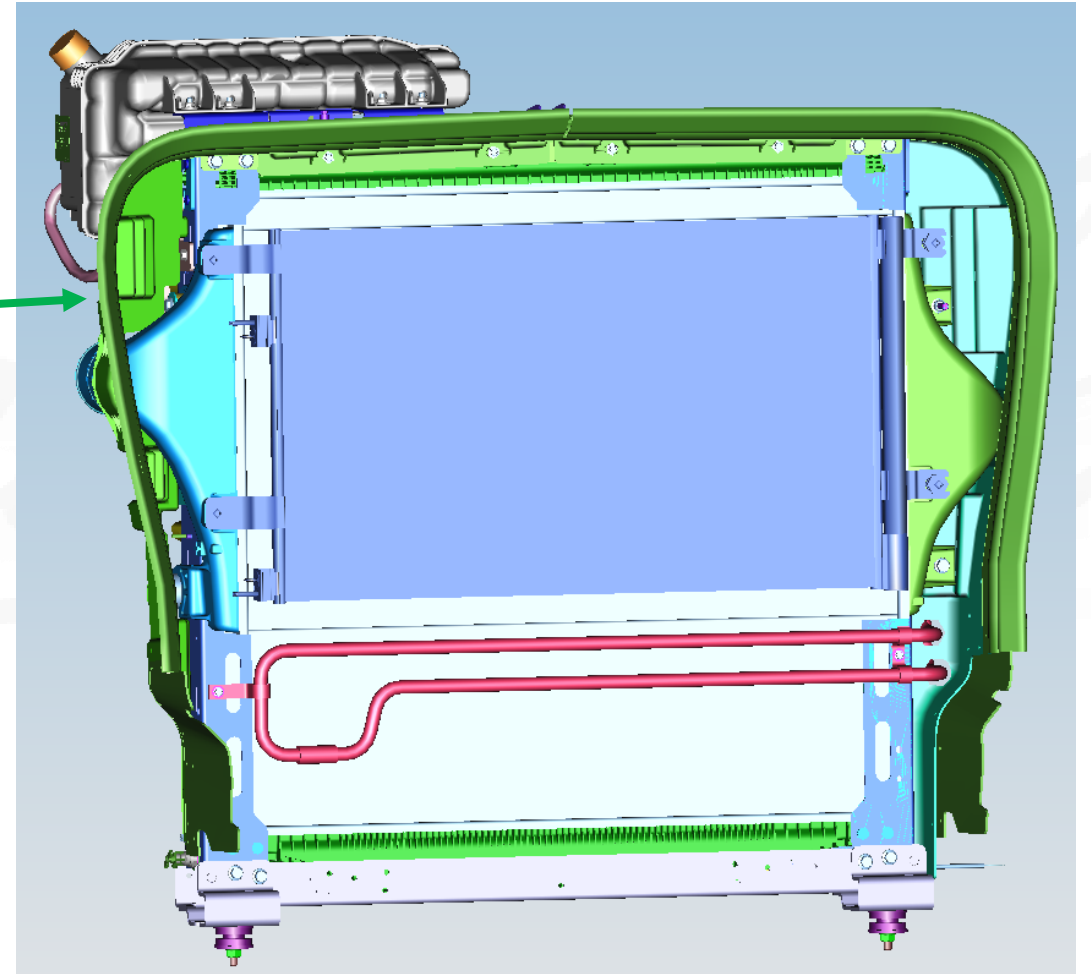
F: Cooling module to hood seals

A:

- 13% better sealing, to prevent hot air from recirculating through the cooling module
- 10% more air flow through cooling module

B:

- Less de-rate
- Less fan on time
- Improved aerodynamics



THE NEW INTERNATIONAL A26 ENGINE

BUILT WITH UPTIME IN ITS DNA

The logo for the International A26 engine, featuring a stylized, metallic-looking 'A' followed by the number '26' in a bold, sans-serif font. The logo has a 3D effect with highlights and shadows, suggesting a metallic or chrome finish. It is positioned in the bottom right corner of the image.

A26

NOMENCLATURE



The A26 nomenclature hints at the common block shared with the MAN D26 engine.



A stands for Alpha

- The first or a new beginning
- Domination and strength
 - Project Alpha

26

Shorthand for the 126mm piston diameter, an indication of the size of the engine.

THE INTERNATIONAL A26 ENGINE

UPTIME

We are standing behind it with the **best engine warranty in the industry - two years and unlimited miles.**

FUEL EFFICIENCY

The A26 is up to 5% more fuel efficient. This is the most efficient engine offered in our on-highway product lineup (LT Series).

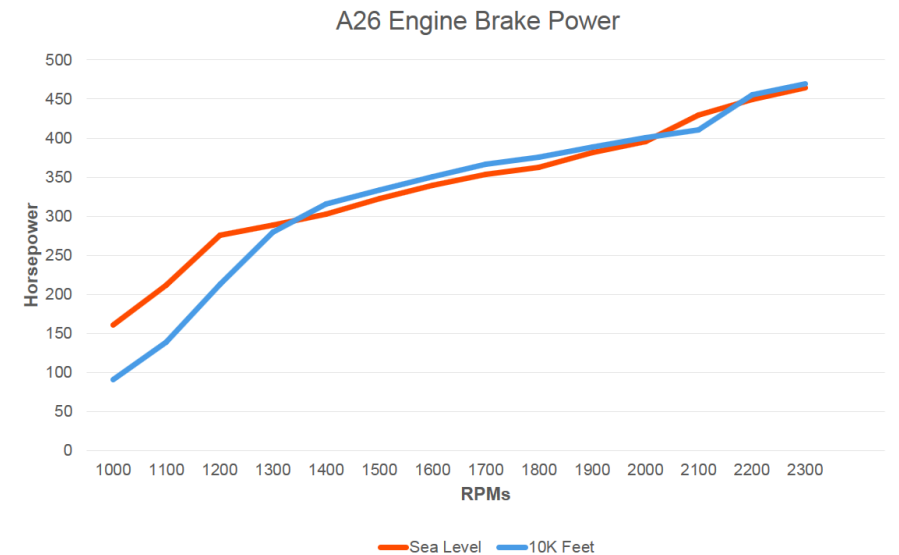
WEIGHT

At 2,299 lbs. the A26 is the lightest engine in its class and enables an impressive 200 lbs. of additional weight reduction in vehicle mounted components (after treatment, cooling module, after treatment control module delete).

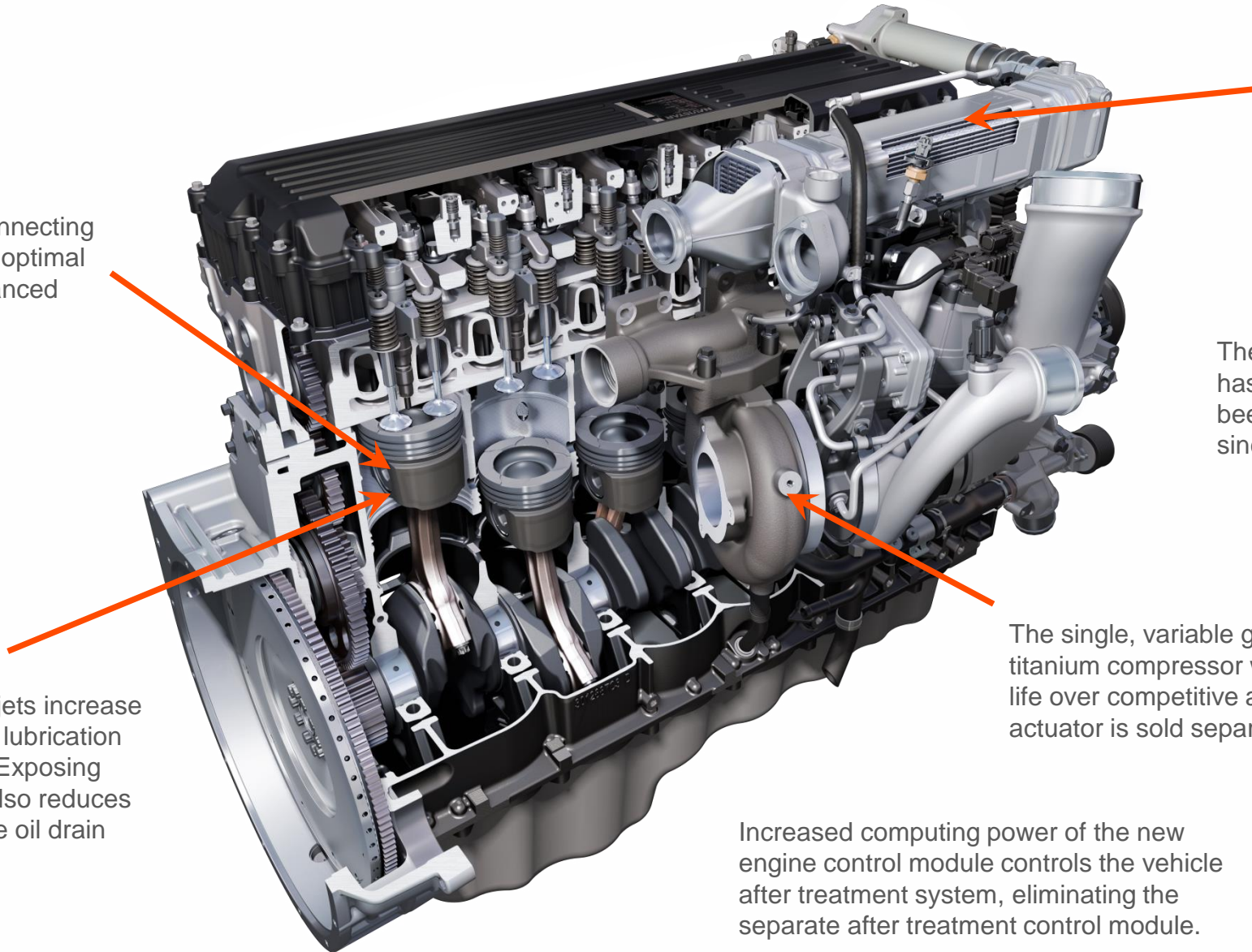
NOISE

The A26 is our quietest engine, so you can have a clear conversation outside the truck when it's running and so you can enjoy the quiet ride on the road.

Engine braking power is **increased by up to 67%** for confident braking performance, particularly at low- to mid-RPMs and at higher altitudes.



BORN WITH **UPTIME** IN ITS DNA



Stainless steel, laser welded, single stage EGR cooler delivers proven durability and performance, in a compact, easy to service design.

The high pressure common rail fuel pump has undergone six years of testing and has been in production on the MAN D38 15 liter since 2015, with proven reliability.

The single, variable geometry turbocharger features a titanium compressor wheel, delivering superior fatigue life over competitive aluminum designs. Electronic actuator is sold separately, reducing service cost.

Increased computing power of the new engine control module controls the vehicle after treatment system, eliminating the separate after treatment control module.



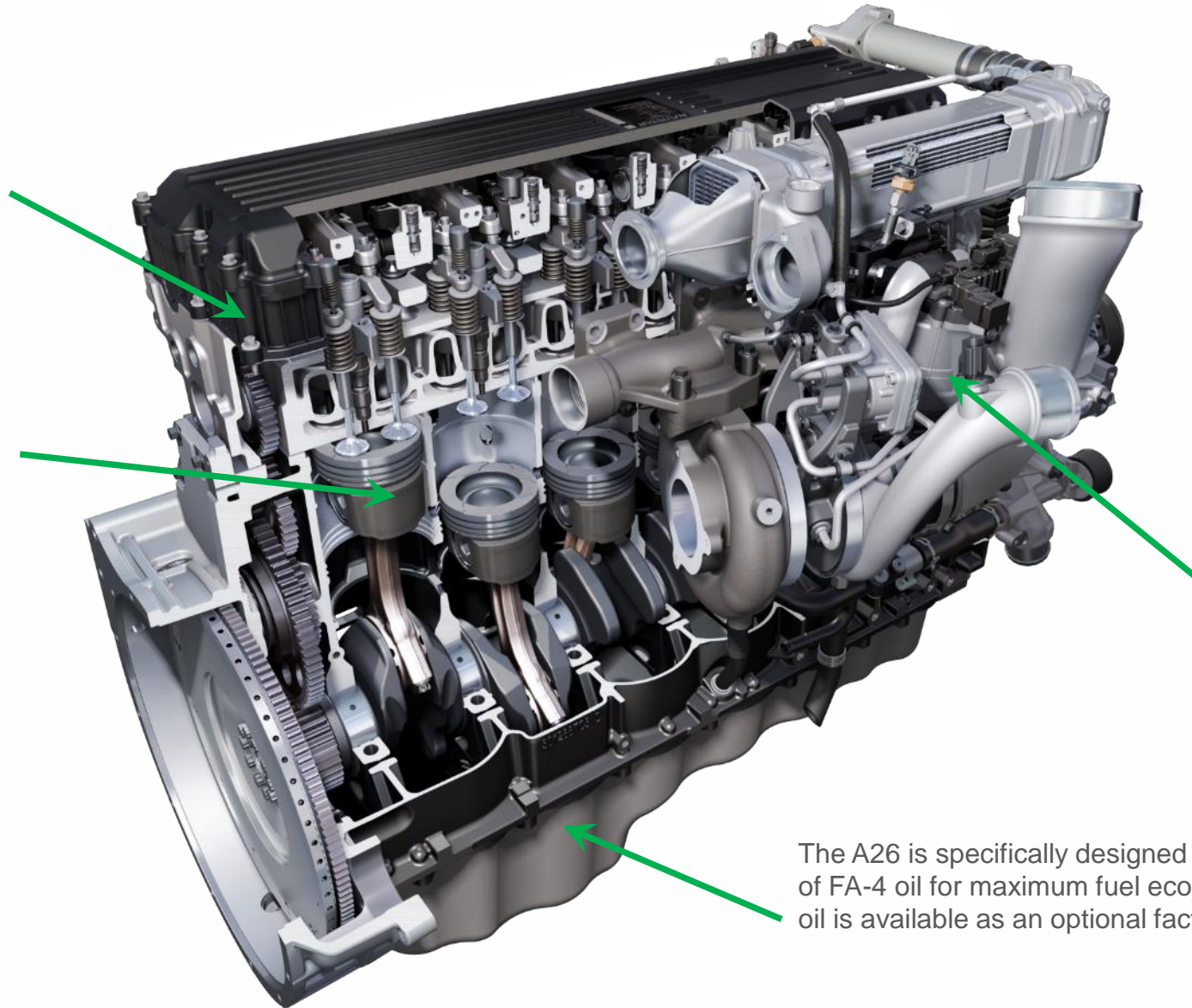
The larger piston pin, connecting rod, and bushing deliver optimal load distribution for enhanced durability.

Smaller piston cooling jets increase oil pressure, improving lubrication and engine durability. Exposing less oil to hot pistons also reduces oil oxidation, to improve oil drain interval.

UP TO 5% BETTER FUEL ECONOMY

The cylinder head coolant passages are 50% less restrictive, reducing parasitic loss to the water pump, improving fuel economy.

The all new piston assembly features a low friction skirt coating and low friction rings for increased fuel economy.



2500 bar (36,300 psi) high pressure common rail fuel system delivers maximum fuel injection pressure to reduce emissions and fuel consumption, with multiple injection events for smooth and quiet operation.

Oil cooler thermostat bypass allows oil to bypass the oil cooler in cold weather, to improve fuel economy.

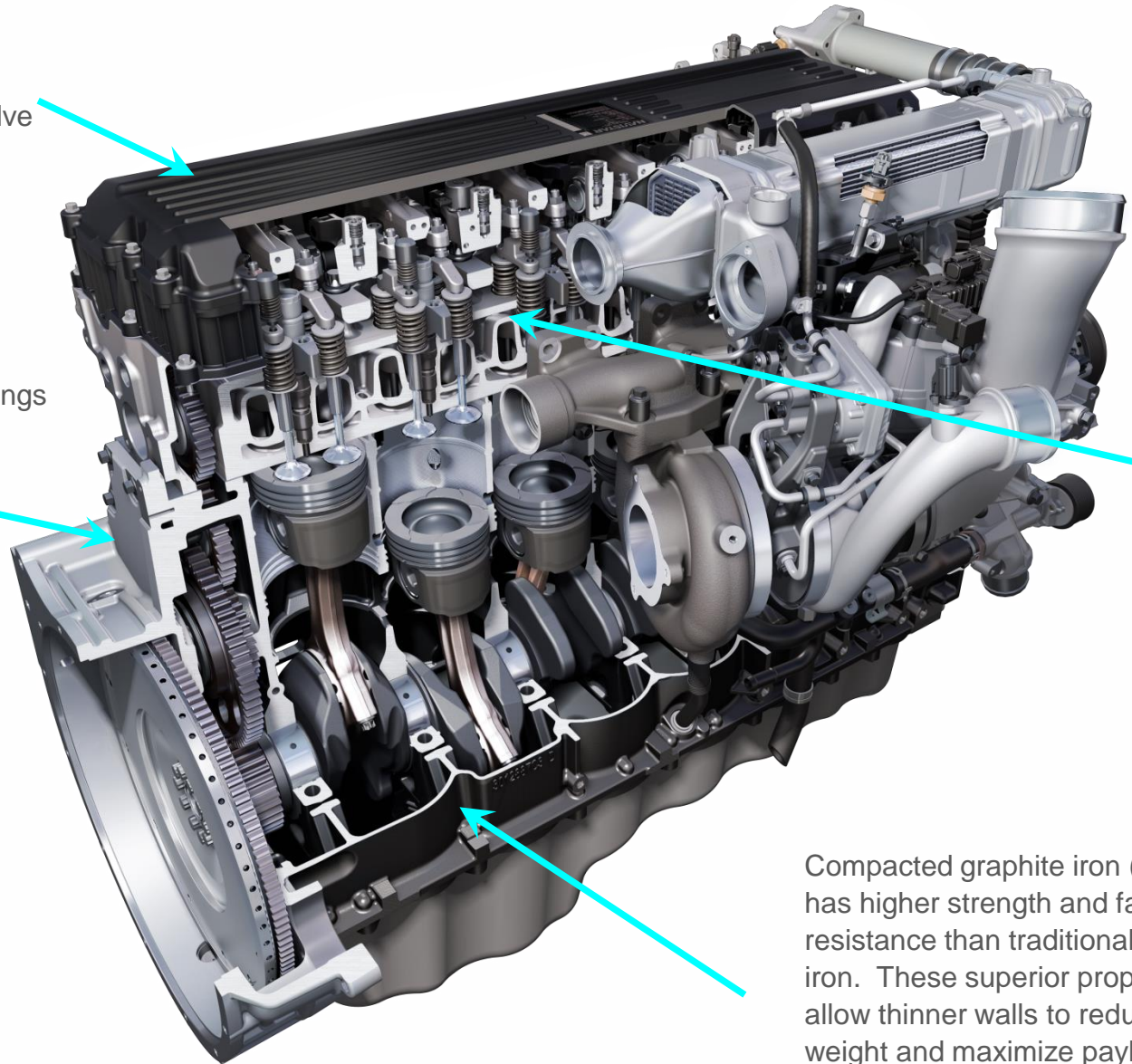
The A26 is specifically designed to allow use of FA-4 oil for maximum fuel economy. FA-4 oil is available as an optional factory fill.



THE **LIGHTEST** ENGINE IN ITS CLASS

The composite valve covers are lighter than traditional aluminum valve covers.

The shot peened aluminum flywheel housing delivers high strength with large weight savings over a traditional iron flywheel housing.



At 2,299 lbs., the A26 is **600-700 lbs. lighter than traditional 15 liter designs**

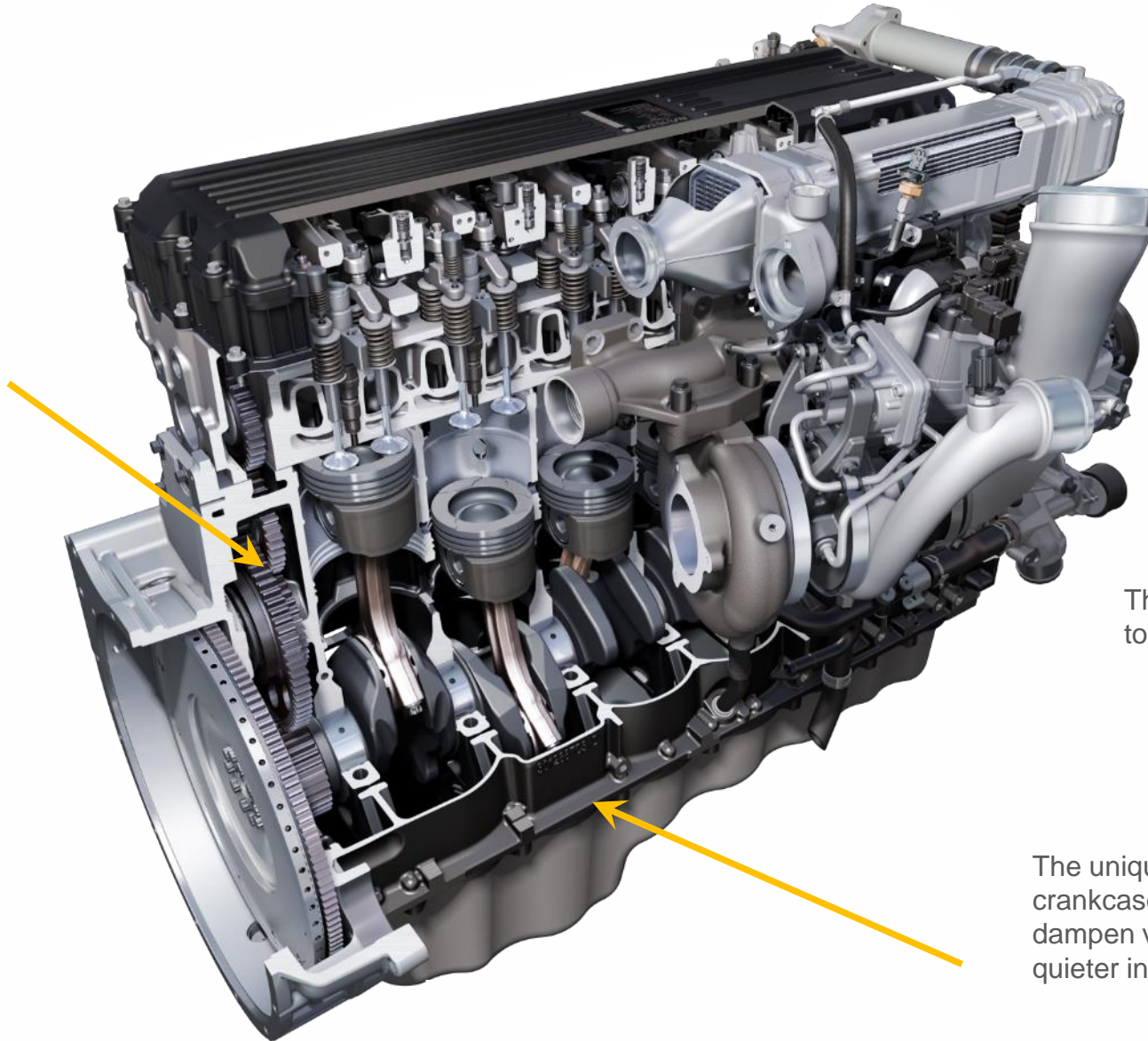
The assembled camshaft features tool-grade steel lobes that are almost as hard as diamonds for unsurpassed durability, with hollow design to minimize weight.

Compacted graphite iron (CGI) has higher strength and fatigue resistance than traditional gray iron. These superior properties allow thinner walls to reduce weight and maximize payload.



THE QUIETEST ENGINE WE OFFER

The gear teeth are produced using a grinding process for a smoother, harder gear surfaces that create less noise.



The six blade fan (not shown) generates less noise by having less blades.

The A26 calibration is specifically programmed to reduce engine noise.

The uniquely sculpted crankcase is designed to dampen vibration for a quieter in-cab experience.



LONGER SERVICE INTERVALS

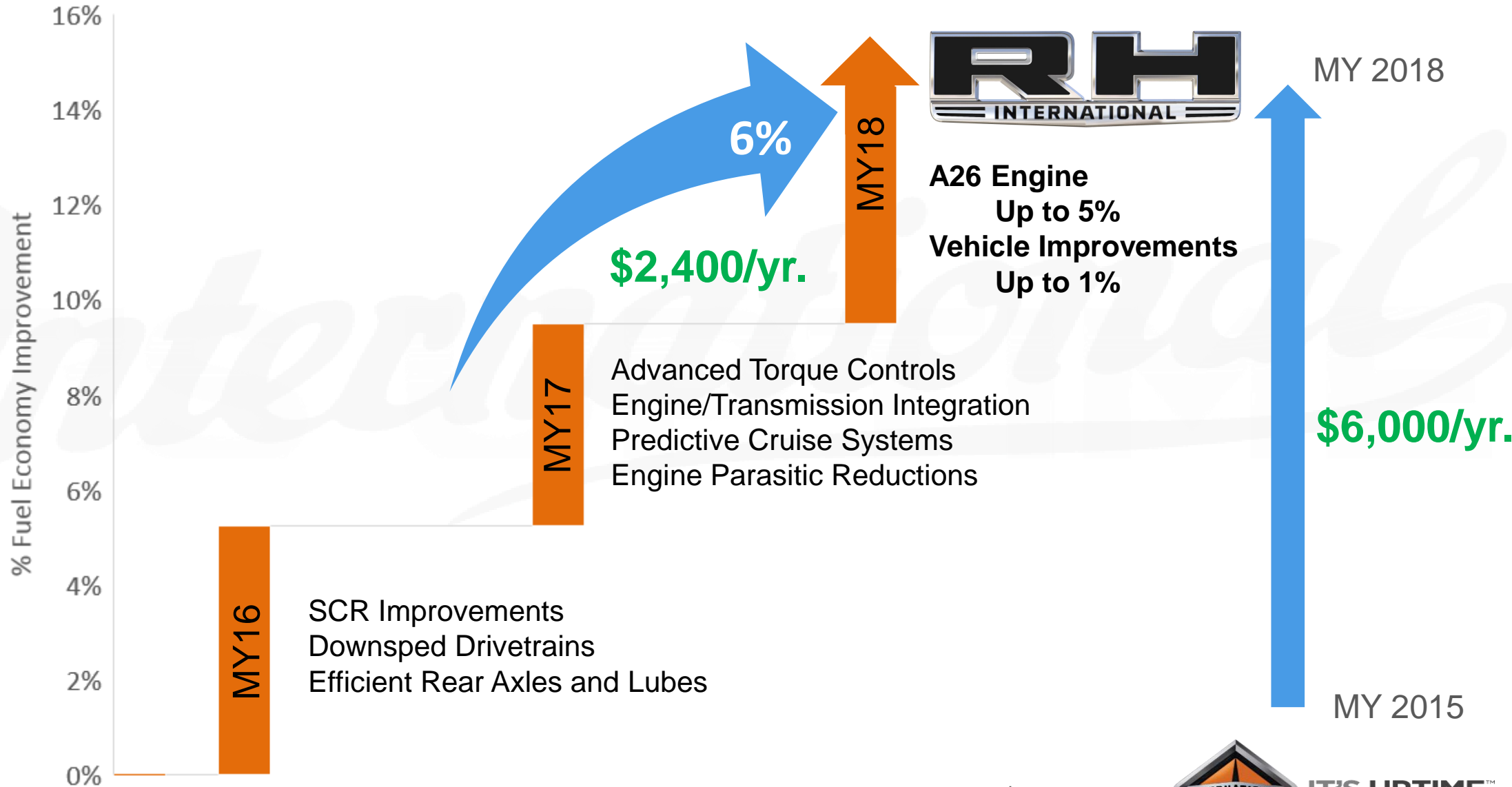
Service interval by mpg	> 6.5 mpg	5.5 to 6.5 mpg	< 5.5 mpg
Oil and oil filter	50,000 miles or Up to 70,000 miles (with oil sampling and International Truck approval)	30,000 miles	20,000 miles, 400 hours, 6 months
DPF cleaning	600,000 miles, 11,000 hours	500,000 miles, 9,000 hours	350,000 miles, 9,000 hours

- Fuel filter: every oil change or 1,300 hours
- Coolant filter (optional): every fourth oil change or 12 months*
- Valve lash: at 120,000 miles, at 300,000 miles, then every 300,000 miles
- DEF filter: every 300,000 miles

*Coolant filter recommended for applications with in-transit heat.



THE A26 IS ACCELERATING FUEL ECONOMY'S CLIMB



At 120,000 miles at \$2.50/gal



IT'S UPTIME™

RH113

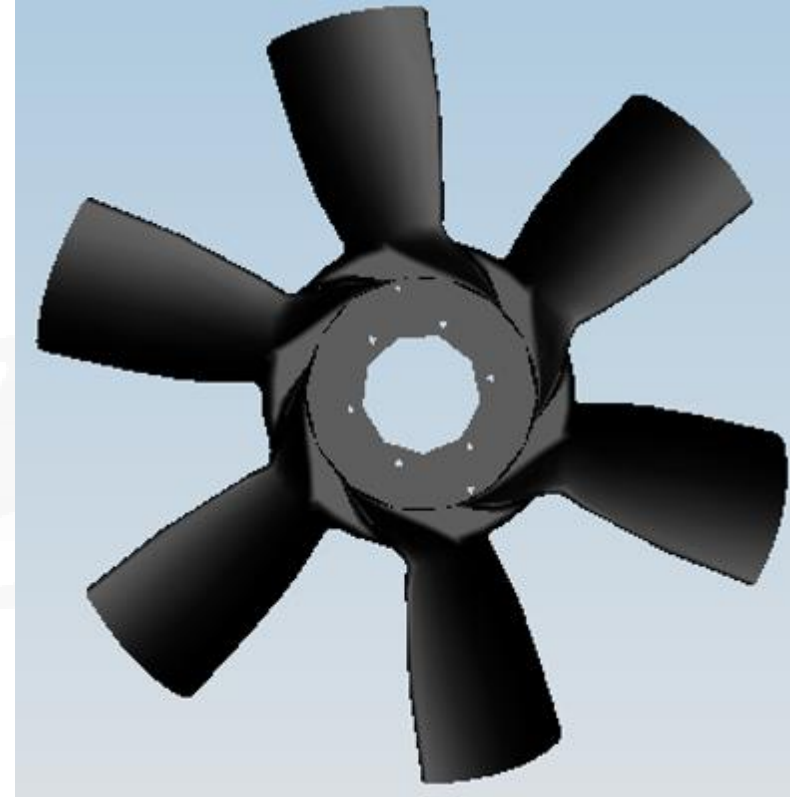
F: Fan

A:

- A26 blade count reduced 11 to 6

B:

- Reduced fan noise
- 31 horsepower more available to the wheels at 1400 RPM range
- Improved fuel economy



RH113

F: Fan clutch

A:

- On off clutch now standard
- 2-speed clutch now optional

B:

- 7 lbs. weight savings
- Can reduce fan on time in hot ambient conditions while extending clutch life



RH113

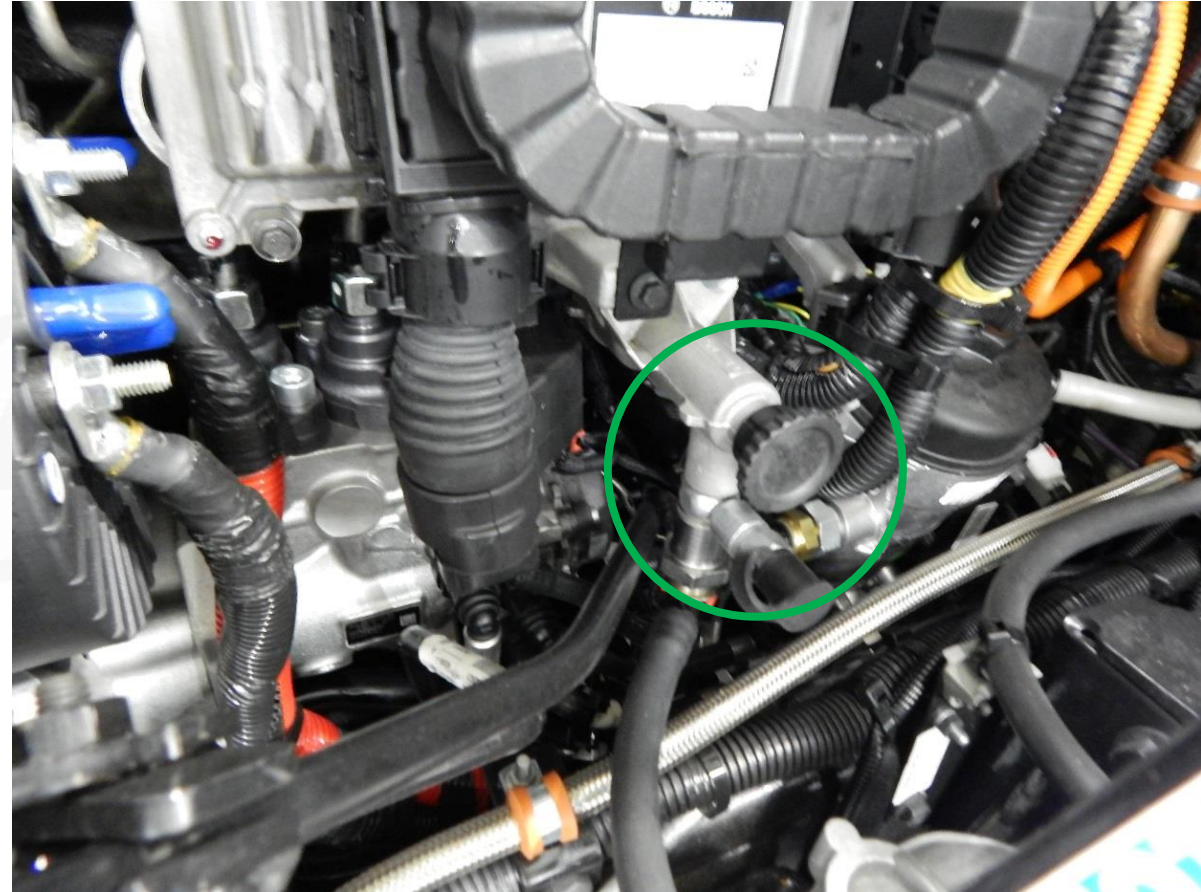
F: Hand primer pump

A:

- Outboard facing
- 2.5 times larger than ProStar

B:

- Easy access
- 2.5 times less strokes to prime



RH113

F: Oil filter

A:

- Service protection zone above the oil filter free of other components

B:

- Easy access for fuel filter service
- Low risk of debris falling into fuel filter module during service



RH113

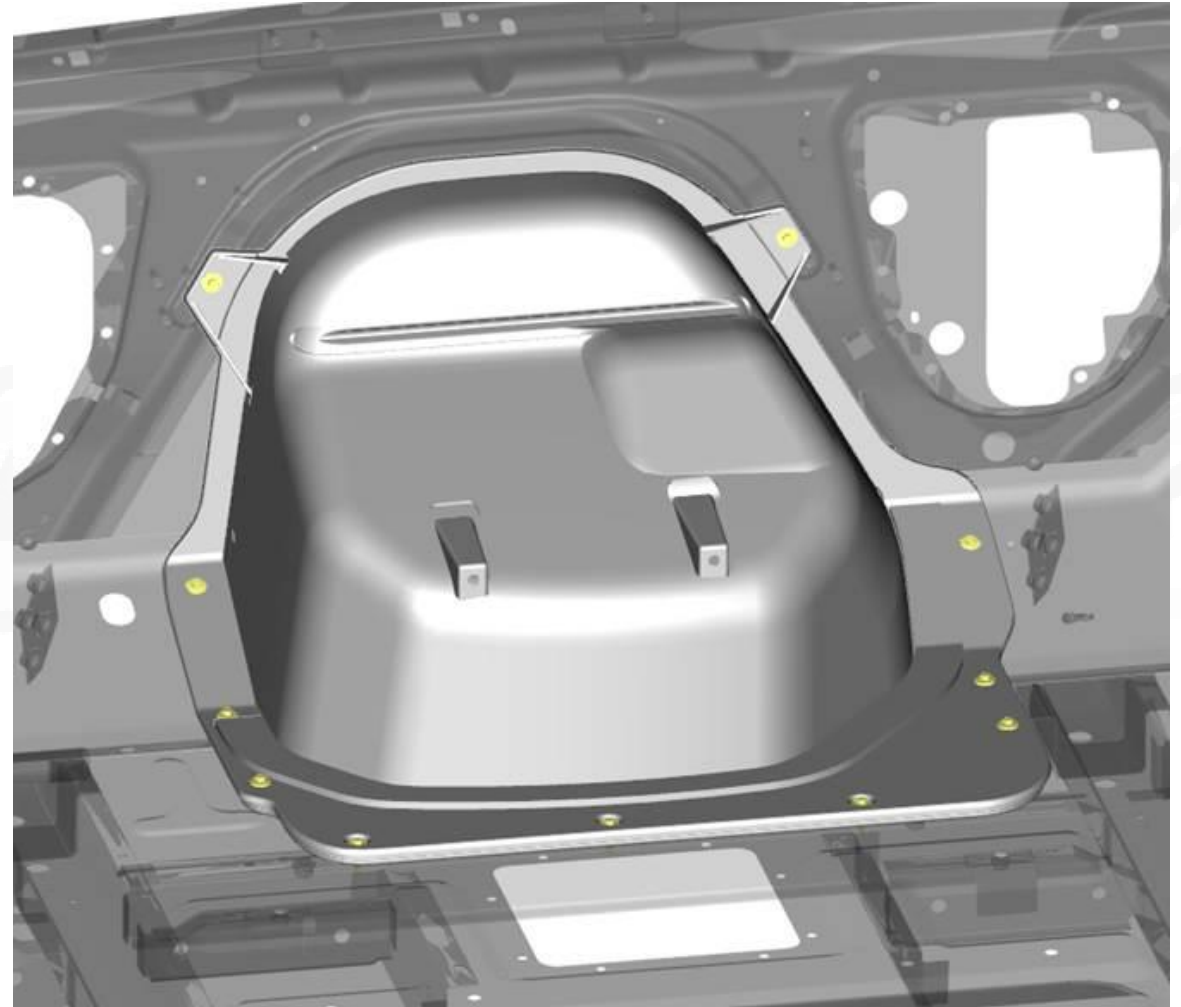
F: Engine cover

A:

- Can be accessed with all HVAC module and ducts in place

B:

- Reduces service time for any repair requiring removal of the engine cover



RH113

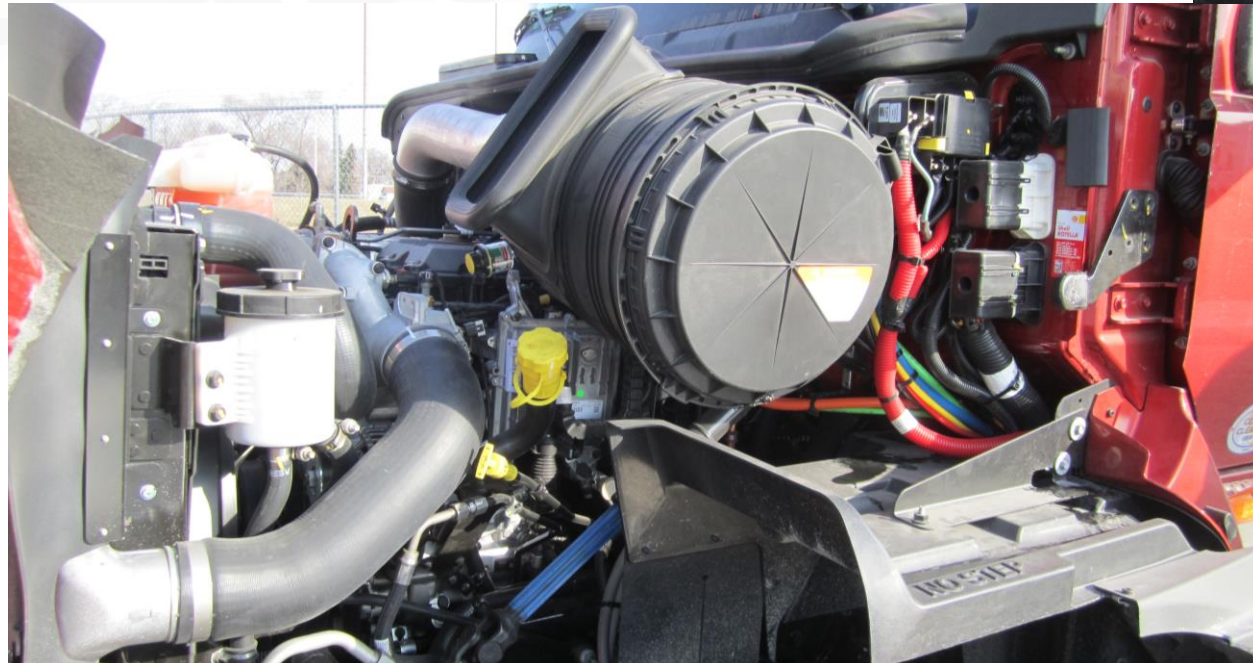
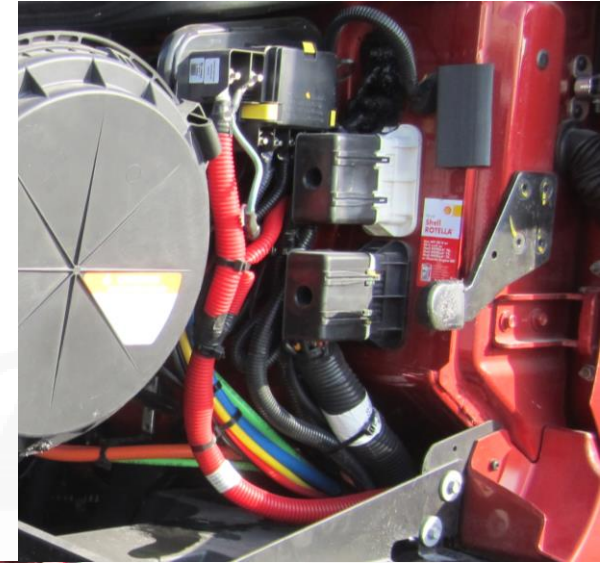
F: Power distribution module

A:

- Under hood location on outboard side of the vehicle

B:

- Easy access



RH113

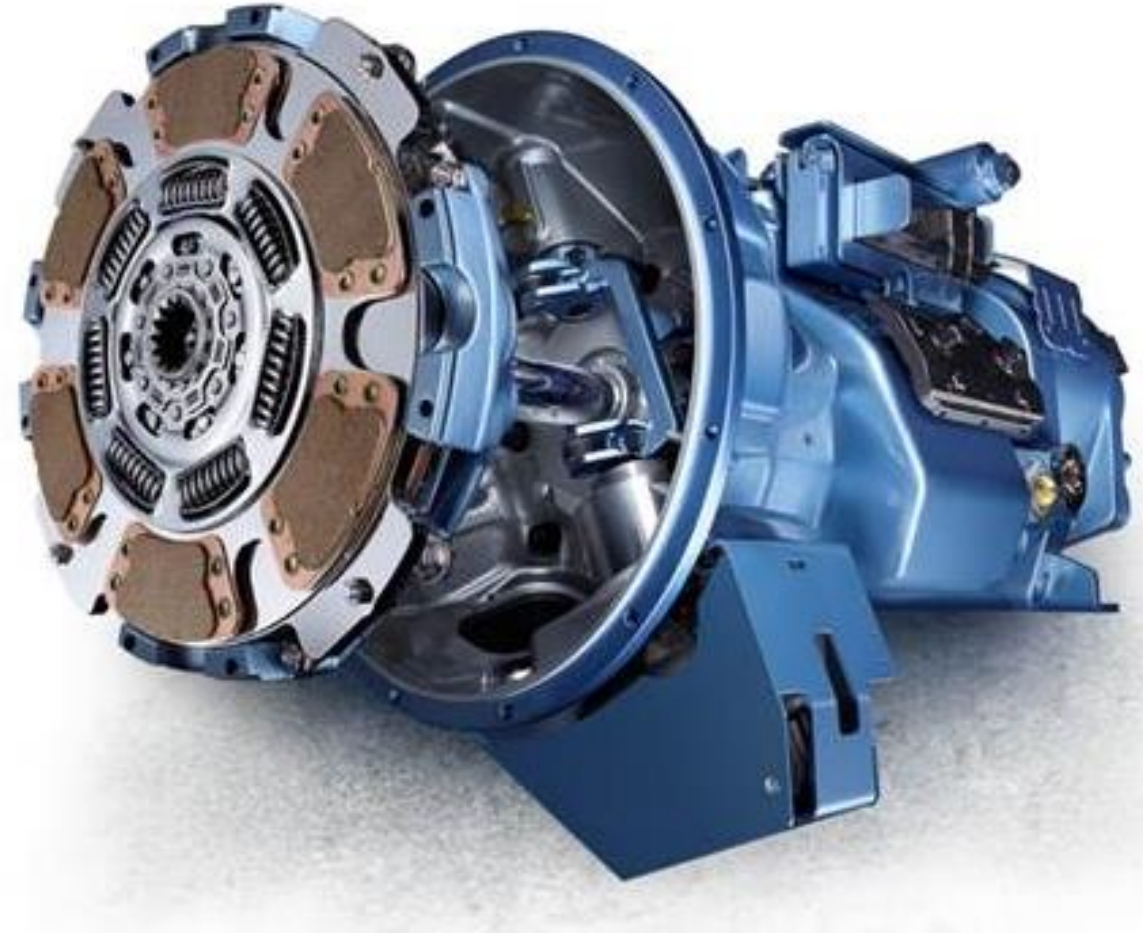
F: Transmission

A:

- Eaton Fuller Advantage 10 speed manual with overdrive standard

B:

- Proven, reliable transmission



RH113

F: Washer bottle

A:

- 2.5 gallon capacity

B:

- Allows two, one gallon bottles to be added



RH113

F: Electrical architecture

A:

- J1939 based, including HVAC system

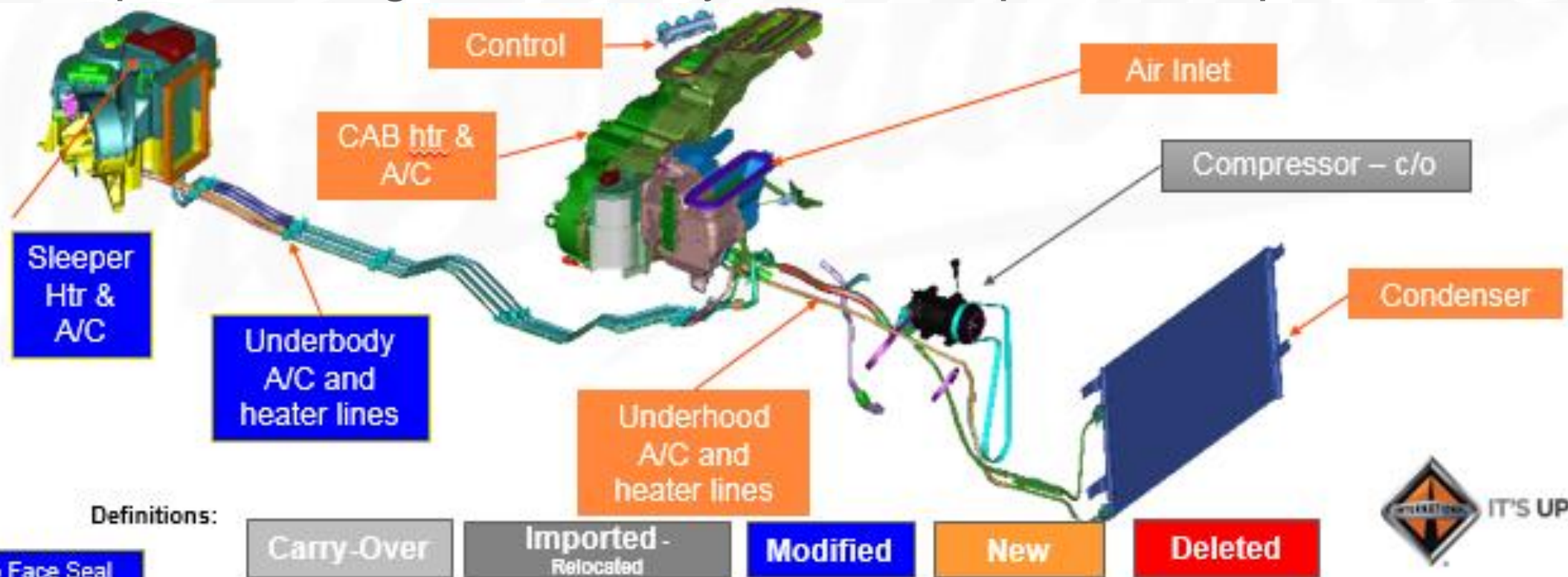
B:

- Allows diagnostic capabilities to improve fault detection and reduce repair time

F: HVAC system

A:

- Ground up new design of entire system, except the compressor



RH113

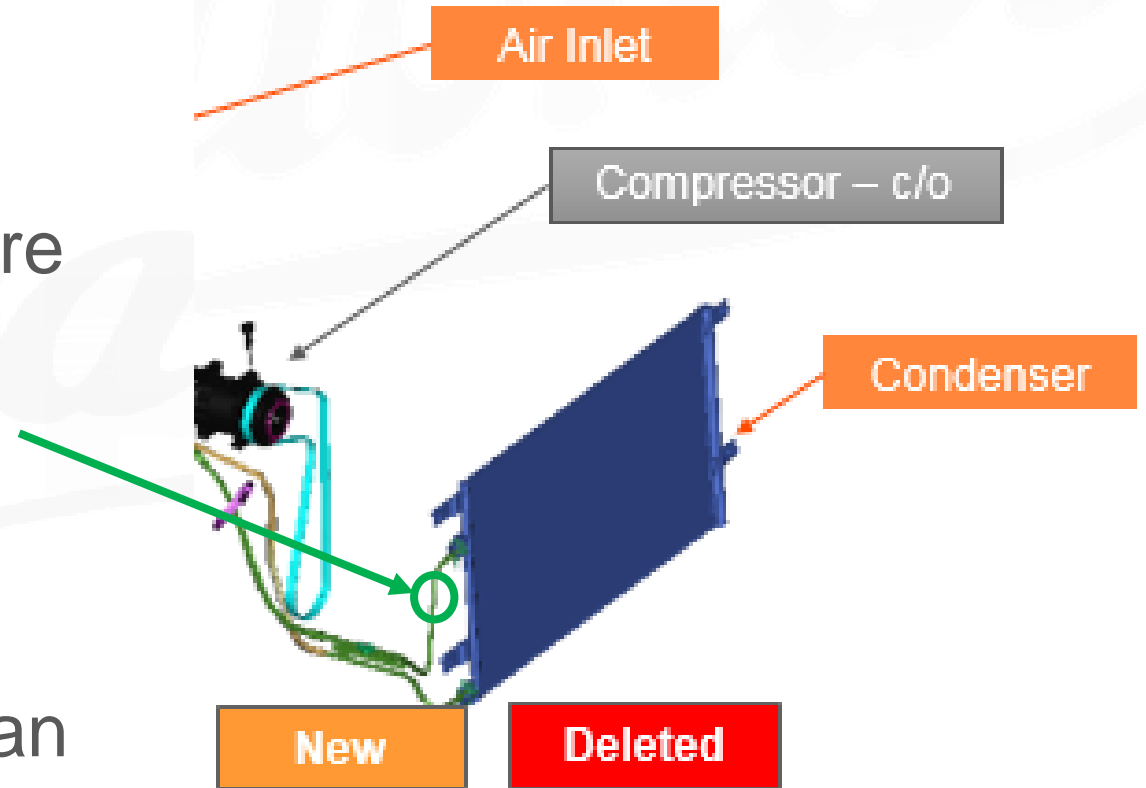
F: HVAC low refrigerant sensor

A:

- Measures refrigerant temperature and pressure to infer refrigerant level

B:

- Operating with low refrigerant can fail the compressor. The sensor reports low refrigerant fault code before damage occurs



RH113

F: HVAC blower motor

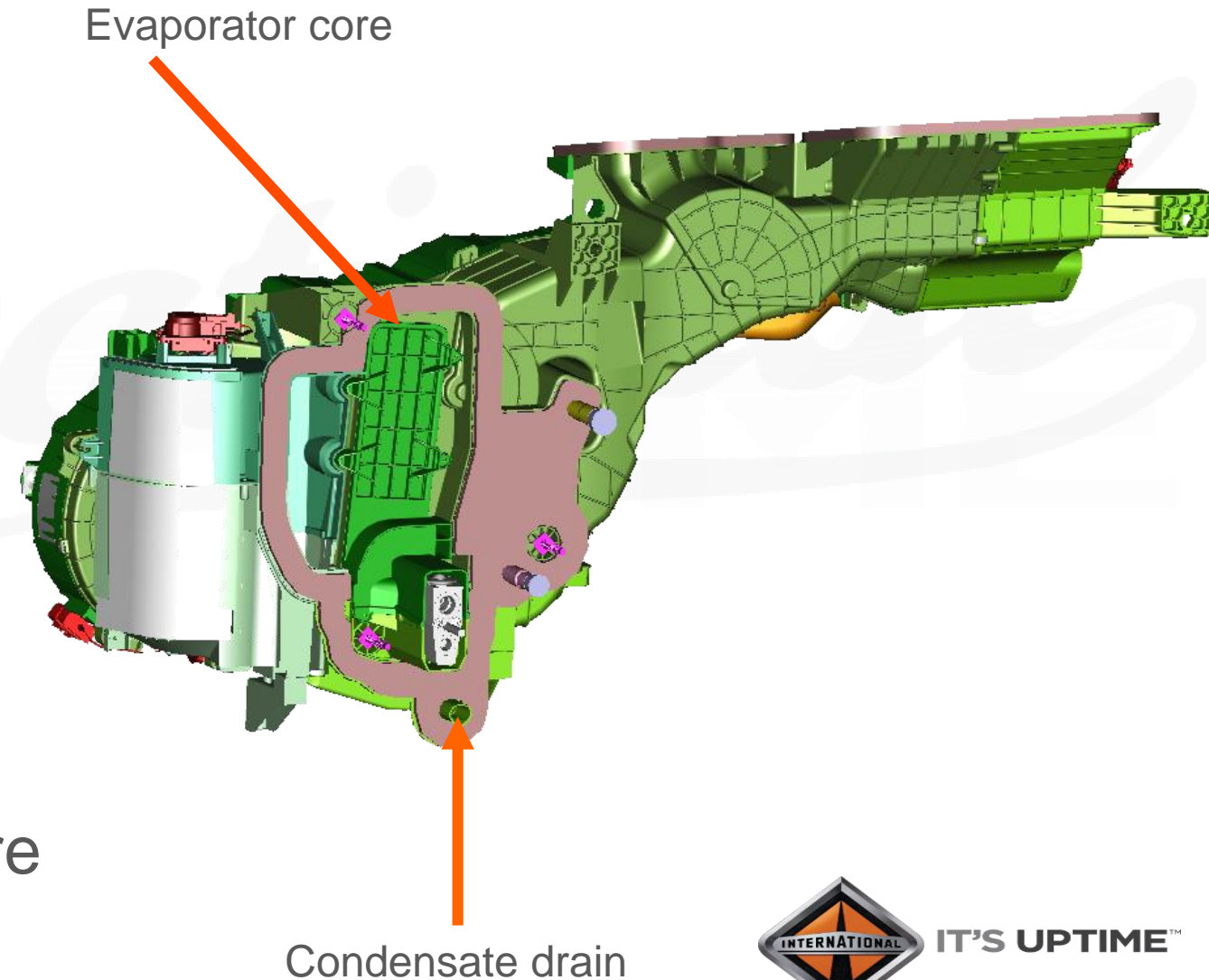
A:

- Brushless
- Upstream of evaporator
- Includes diagnostics

B:

- 3 times longer life than ProStar
- Operators in a dry environment and is capable of water exposure
- Reduced diagnostic repair time

Blower controller Linear Power Module (LPM) eliminated.



RH113

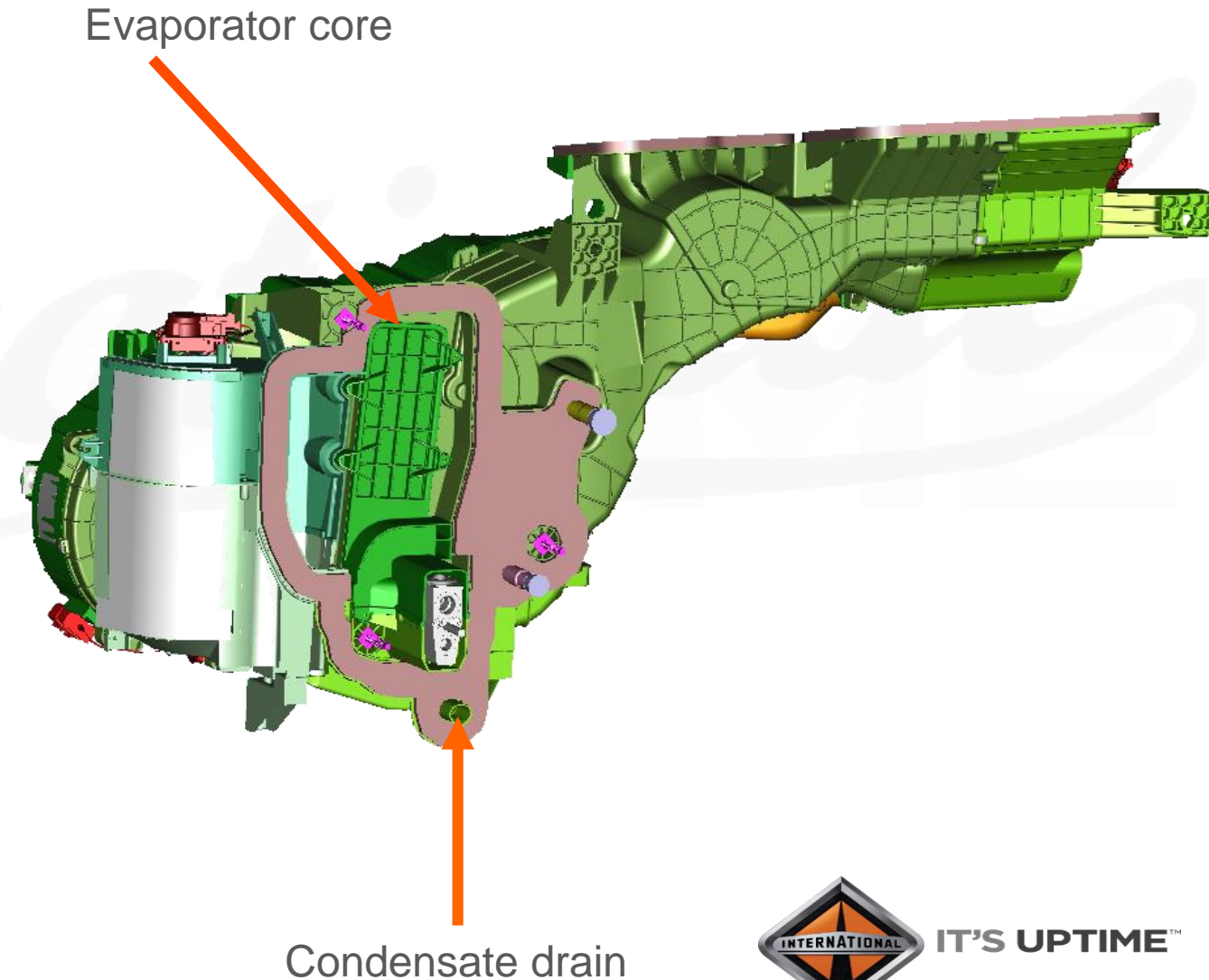
F: Evaporator core

A:

- Service able from the engine compartment
 - Rain tray can remain in place
 - Inlet air assembly can remain in place

B:

- Reduces service cost



RH113

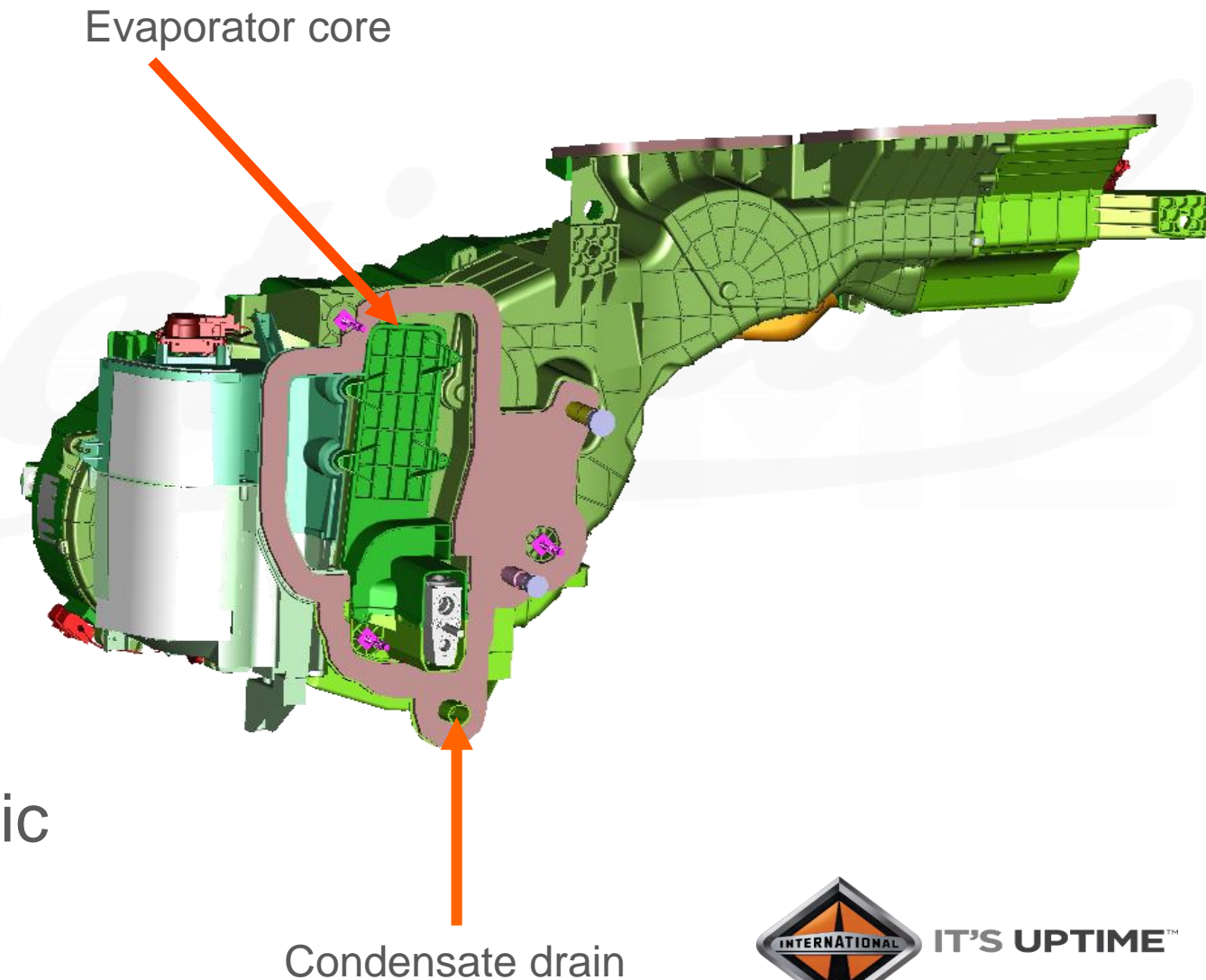
F: HVAC condensation management

A:

- Actuators have drip loops
- Protective coating on circuit boards

B:

- Direct water away from electronic actuators
- Shed water if exposed to water



RH113

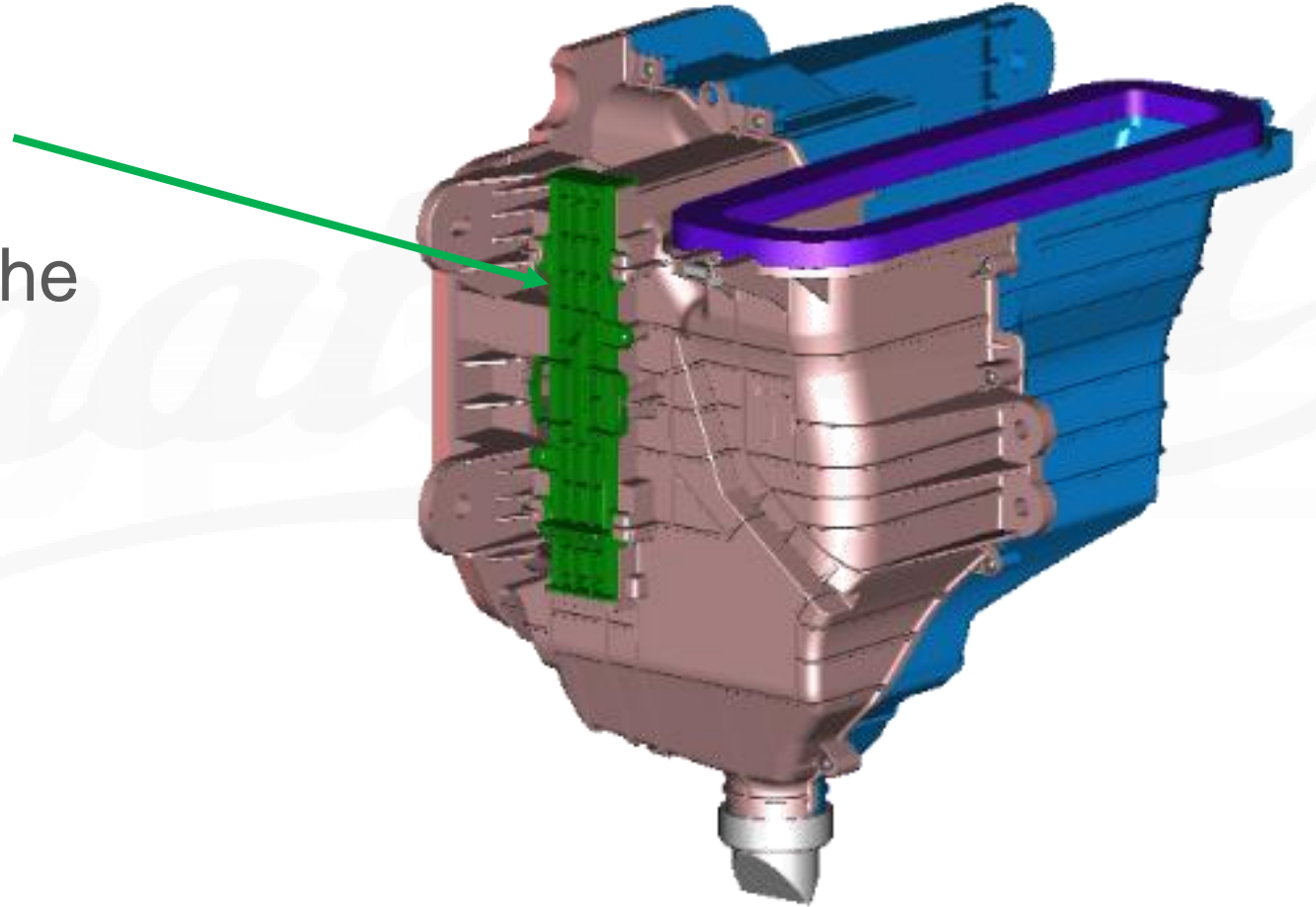
F: HVAC fresh air filter

A:

- Retaining tabs molded in to the cover

B:

- Tool free service



RH113

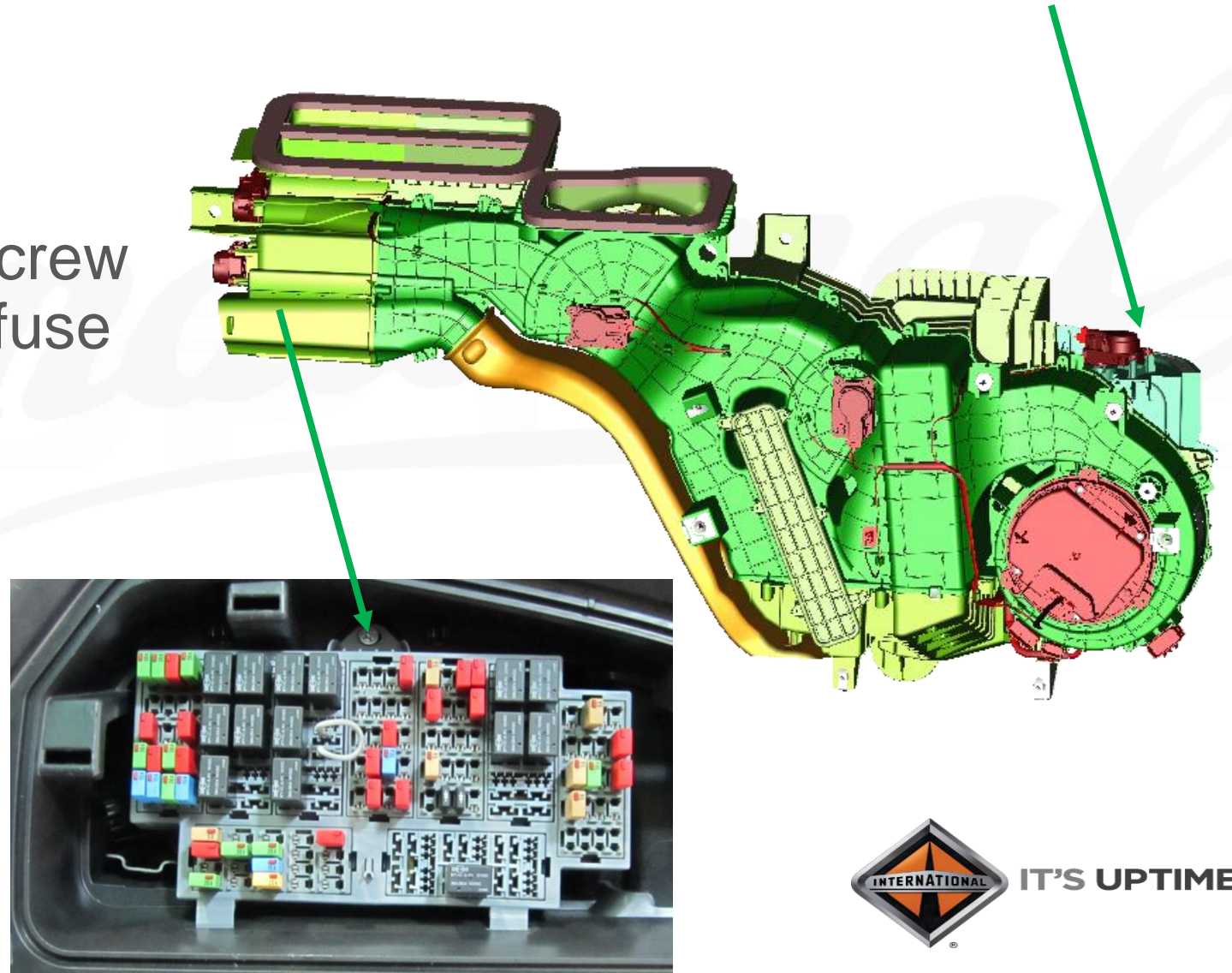
F: HVAC fresh air filter

A:

- One filter, one cover, one screw serviced through the PDM fuse panel

B:

- Easy to service



RH113

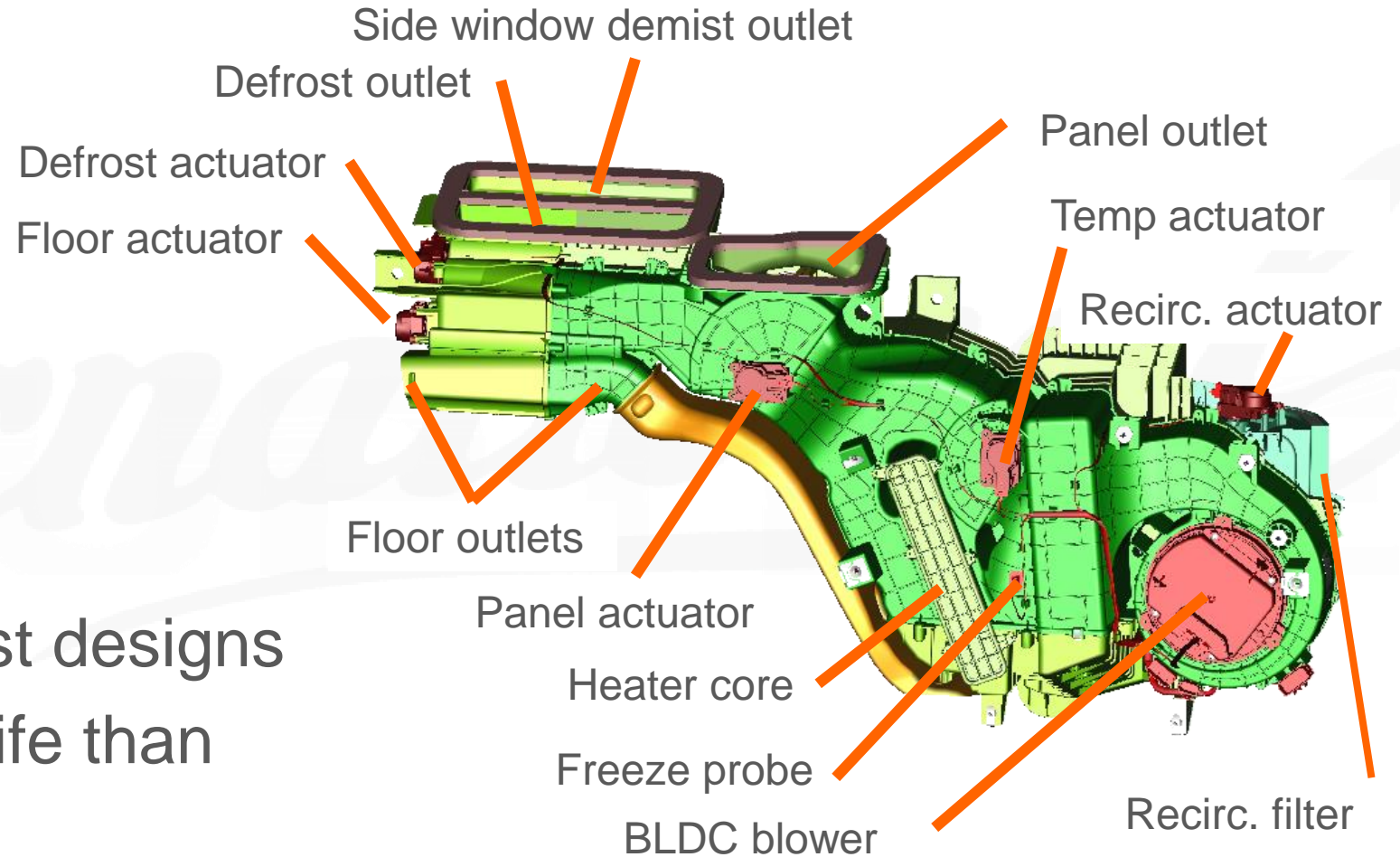
F: HVAC doors

A:

- Direct drive doors

B:

- Simplest and most robust designs
- 3 times longer actuator life than ProStar



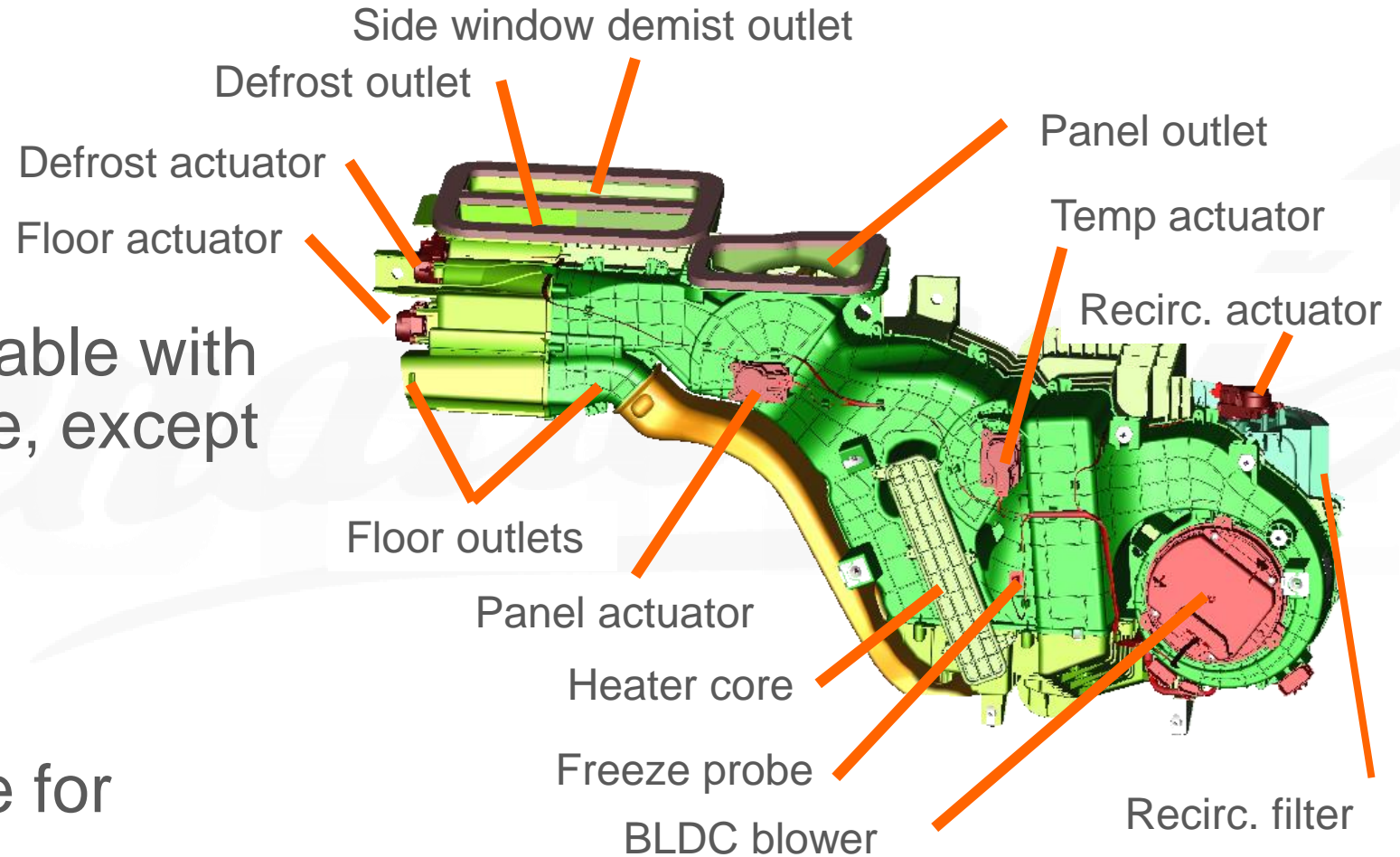
F: HVAC actuators

A:

- All actuators are serviceable with instrument panel in place, except panel actuator

B:

- Low labor cost to service for actuators



RH113

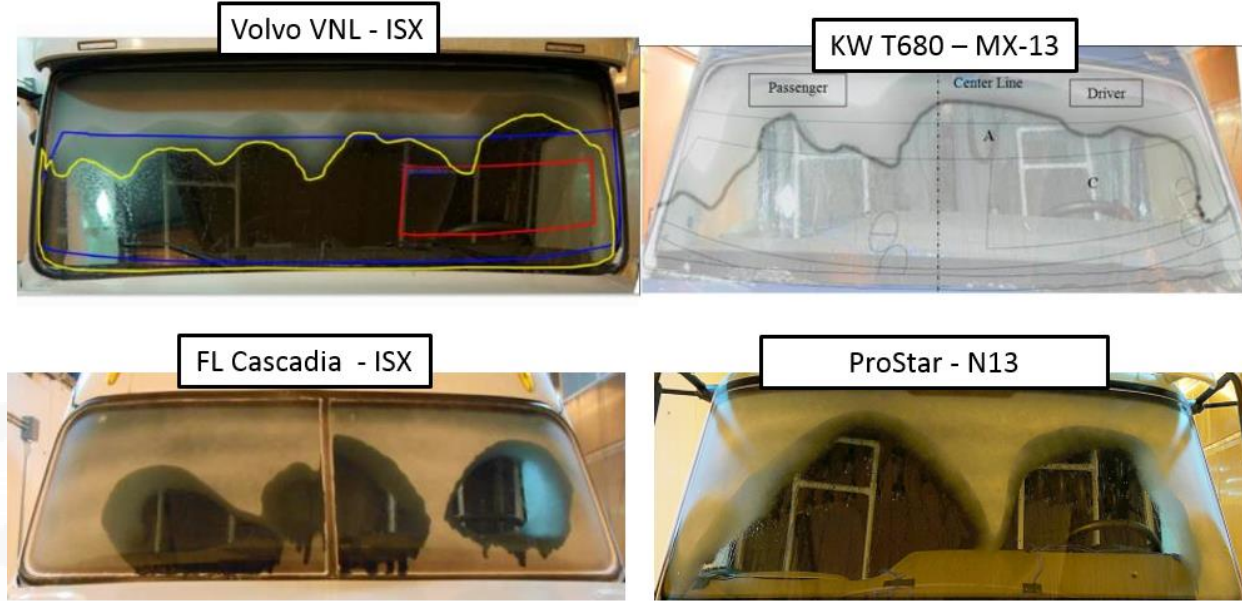
F: HVAC modules and ducts

A:

- More air flow to windows
- Higher heater core capacity

B:

- **Best in class defrost performance**
- More cabin heat available



RH

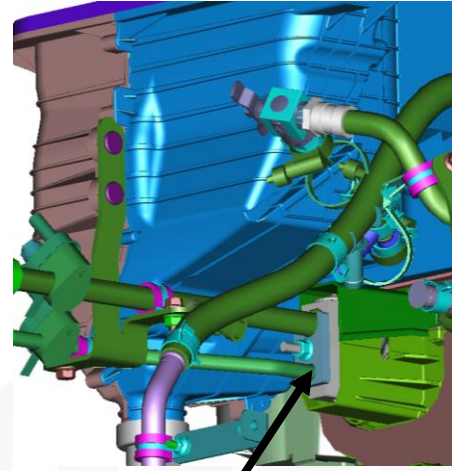


RH113

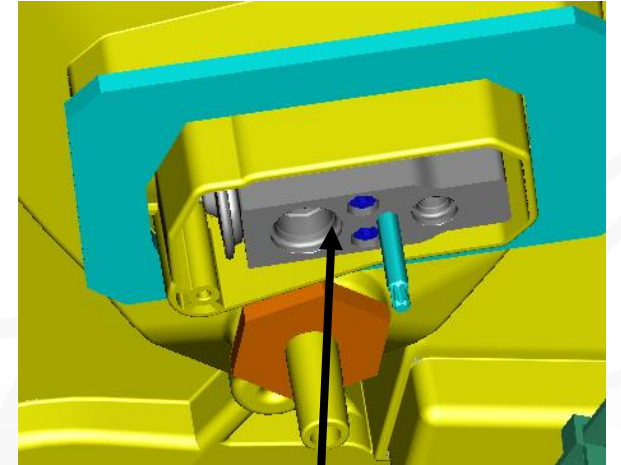
F: HVAC refrigerant seals

A:

- Face seal joints at cab and sleeper TXV



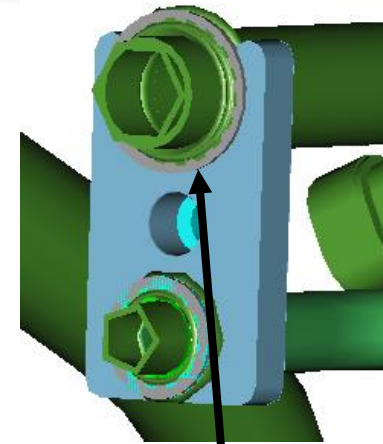
Cab TXV



Sleeper TXV

B:

- More robust during assembly and service, without lubricant, to resolve leaks on ProStar



A/C fittings to TXV



Thank you.

